



**CAPTURE TIRE INFLATION
AND LUG TORQUE TO PRINT ON ESTIMATES
AND INVOICES**

The material in this document is applicable for the VAST Enterprise Retail version 7.2.37 and Greater.

Table of Contents

INTRODUCTION..... 3

DATABASE CHANGES..... 3

VAST MAINTENANCE..... 3

I. Controls – Capture Inflation and Torque Specs..... 3

II. Catalog Settings..... 5

VAST POINT OF SALE..... 6

I. From the Customer Contact Screen..... 6

II. Tire Inflation and Torque Information forced at Invoicing examples.. 9

Invoicing from Estimate Exit screen9

Invoicing from Outstanding Estimates10

III. Accessing the Fitment Capture form from the Part Entry screen... 11

IV. Estimate Print of the Tire Inflation and Torque information..... 13

V. Invoice Print of the Tire Inflation and Torque information..... 14

VI. Creating Phone Quotes and Over the Counter Estimates 14

Introduction

VAST Enterprise Retail now prints **tire inflation** and **lug torque** on both the estimate and invoice for both laser and dot matrix printing.

The **tire inflation** and **lug torque** information can come from the Pearl Tire fitment guide or it can be manually entered.

Database Changes

- The field “**CAPTURE_INFL_LUG**” has been added to the CONTROLS2 table. The default setting is false. This setting can be turned on or off in VAST Maintenance.
- The fields “**TIRE INFLATION**” and “**LUG TORQUE**” have been added to the ESTMTEHDR and HISTHDR tables.

VAST Maintenance

I. Controls – Capture Inflation and Torque Specs

A Vast Maintenance Control option has been added to allow the user to force the capture of the tire and lug torque information which will print on estimates and invoices.

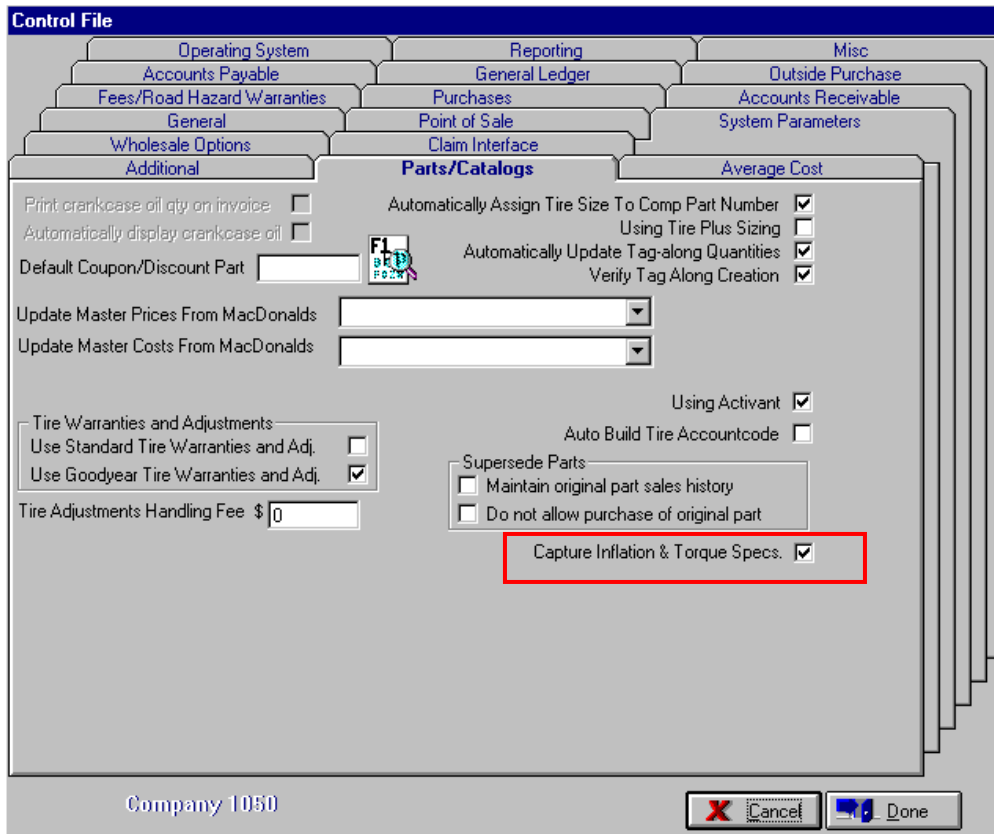
1. Enter VAST Maintenance by double clicking on the desktop icon.
2. Click on the Index button (red arrow).



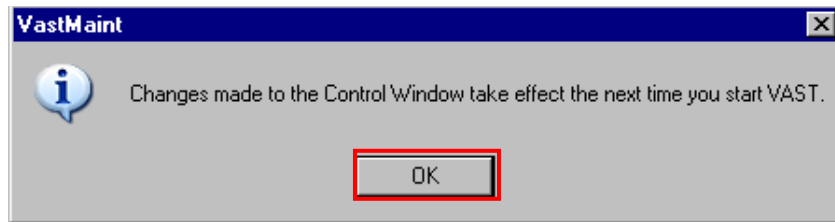
3. Click on the “C” then click on **Controls**.



4. Click on the **Parts/Catalog** tab. Place a checkmark in the ‘**Capture Inflation & Torque Specs**’ checkbox as shown on the following page.



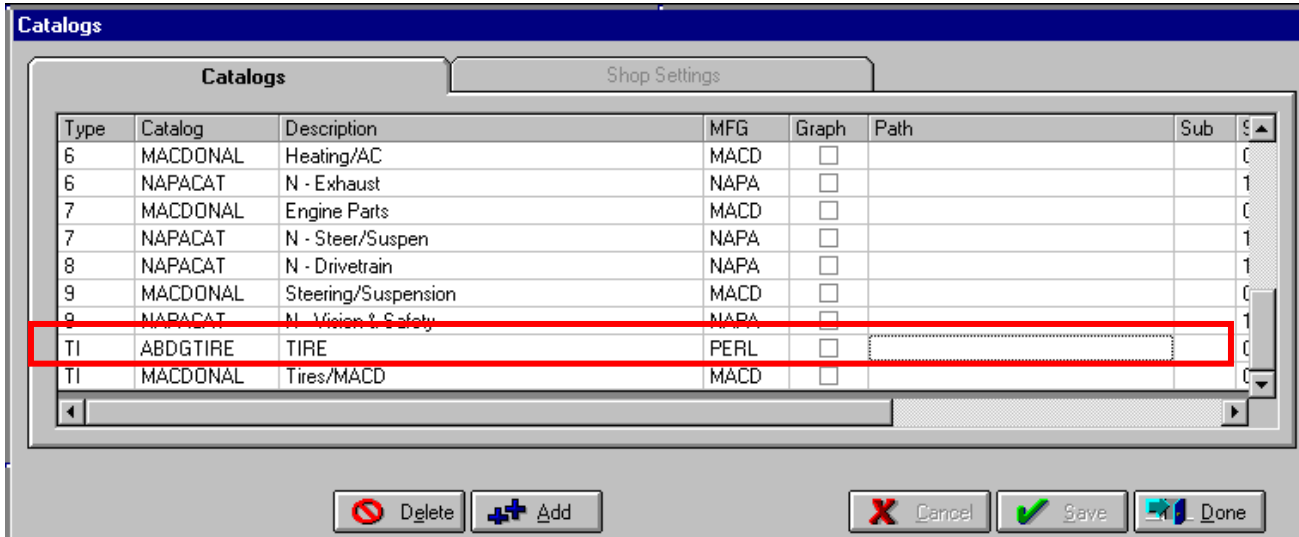
5. Click **Done** to save the setting. You will see the following message.



6. Click on **OK** and you will be taken back to the VAST Maintenance Main menu.

II. Catalog Settings

For the capture of the Tire Inflation and Torque functionality to work, the TIRE catalog entry needs to be changed. The MFG for the TIRE catalog needs to be changed from MMB to PERL. The same ABDGTIRE catalog will be used, but the 'Inflation and Torque functionality' code looks for the MFG of PERL.



VAST Point of Sale

I. From the Customer Contact Screen

1. Access VAST Point of Sale.
2. Create an estimate using **Customer Contact**. Enter the Customer and Auto information.

3. Click on **Next**. Complete any necessary required fields.
4. New with this functional spec, when you move from the Customer Contact to the Estimate Parts screen, the **Catalog** screen will come up with the TIRE catalog selected.

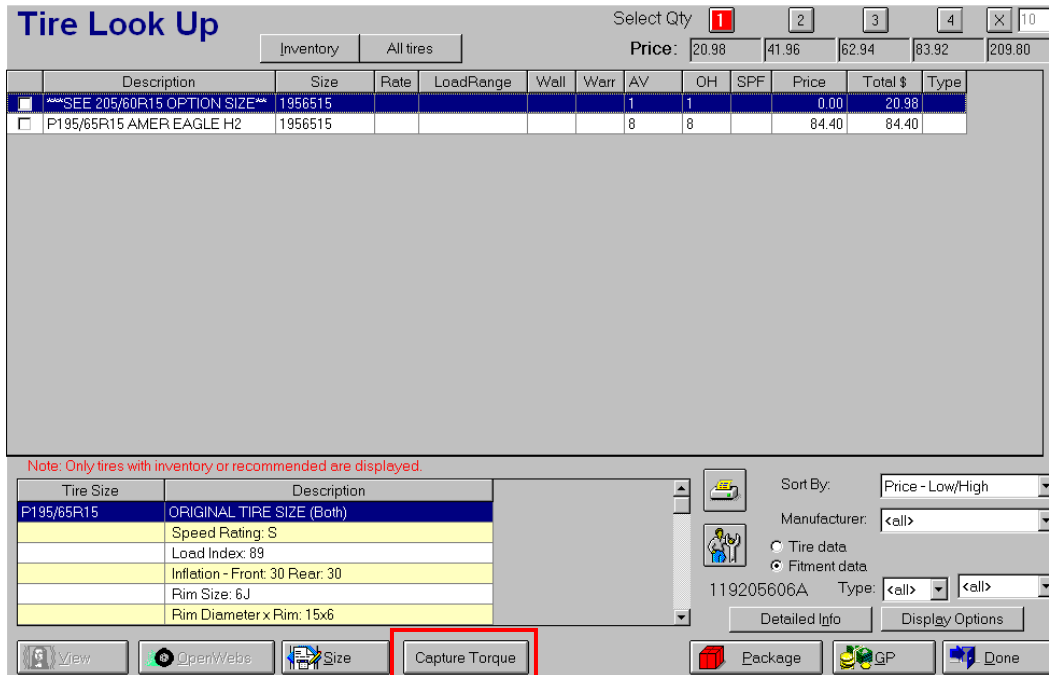
Application	Model	Description
0000332	CAVALIER	2000 Standard
0000333	CAVALIER	2000 LS
0000334	CAVALIER	2000 Z24

5. Highlight a tire catalog application then click on **Select**.
6. You will see the new Fitment Capture screen which displays the Tire Inflation and Lug Torque information for the selected tire catalog application.

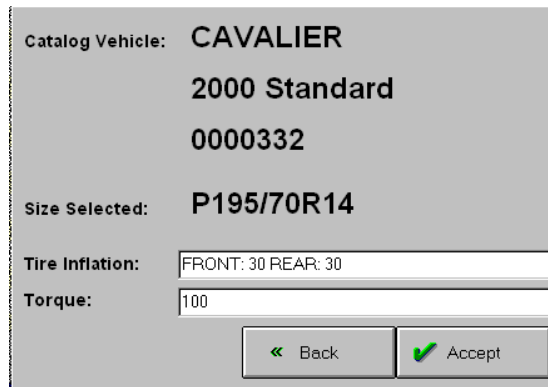
NOTE - If a selected Vehicle has 2 tire sizes, like the Corvette, this form will NOT come up automatically. Instead you are taken to the Tire Look Up screen so you can select which tire size you would like to use.

Catalog Vehicle:	CAVALIER 2000 LS 0000333
Size Selected:	P195/65R15
Tire Inflation:	FRONT: 30 REAR: 30
Torque:	100
<input type="button" value="← Back"/> <input type="button" value="✓ Accept"/>	

- **CATALOG VEHICLE** – This field is automatically populated with the catalogs Model description and Tire catalog Application Number.
- **SIZE SELECTED** - This field is automatically populated with the Tire Size.
- **TIRE INFLATION** - This field is automatically populated with the standard tire inflation psi for this tire size. This field can be updated.
- **TORQUE** - This field is automatically populated with the lug torque for this tire size. This field can be updated.
- **ACCEPT BUTTON** - Clicking the **ACCEPT** button will save the Tire Inflation and Lug Torque information to the estimate and will take you to the Parts Entry screen. This will then print on the Estimate and Invoice.
- **BACK BUTTON** - Clicking on the **BACK** button will take you to the Tire Look Up screen and NOT save the Tire Inflation and Lug Torque information.



1. If you highlight the Tire Size in the tire information grid, the **Capture Torque** button will become enabled.
2. Click on the **Capture Torque** button which will display the new Fitment Capture form.



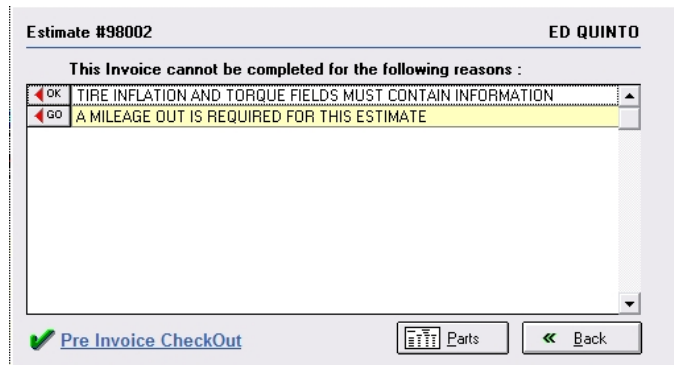
- If you click the Accept button:
 1. The Tire Inflation and Lug Torque information for the selected tire size will be saved to the estimate.
 2. The text in the 'Tire inflation' and 'Torque' fields will then print on the Estimate and Invoice.
- If you click the Back button:
 1. The Tire Inflation and Lug Torque information will NOT be saved to the estimate.
 2. The Estimate will print "**Not Available**" in the Tire Inflation and Torque fields.
 3. When Invoicing the Pre Invoice CheckOut screen will force the completion of the Tire Inflation and Torque fields.

II. Tire Inflation and Torque Information forced at Invoicing examples

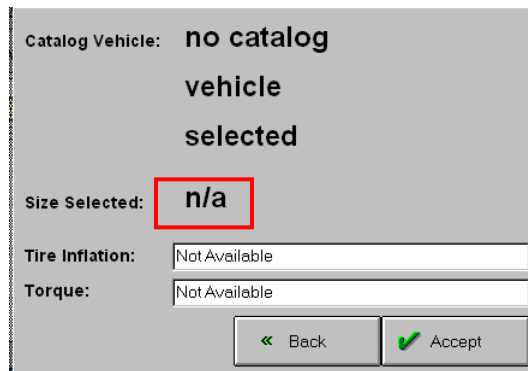
Invoicing from Estimate Exit screen

If you are coming from the Estimate Exit screen and select the 'Create an Invoice' option and the Tire Inflation and Torque information has not been saved, the Pre Invoice CheckOut screen will include a requirement that reads 'TIRE INFLATION AND TORQUE FIELDS MUST CONTAIN INFORMATION'.

1. From the Parts Entry screen click on the Exit button.
2. Since the Tire inflation and torque information has not been accepted for the estimate the Pre Invoice Checkout screen will come up.



3. Click on the OK to the left of the Tire inflation and Torque requirement.
4. The Fitment Capture screen will come up with the Catalog button visible.



OPTIONS at this point:

- a. The user can manually enter a Tire Inflation and Torque in the text fields and click Accept. The user is then taken to the Invoice Payment screen.
- b. The user can click on the Back button. This will take you back to the Pre Invoice Checkout screen and the estimate cannot be invoiced.
- c. Or the user can click on the Catalog button.
- d. In this example click on the Catalog button. This will either bring up the Fitment Capture Form of the last catalog accessed for this estimate, or it will bring up the Catalog screen with the TIRE catalog selected. The user can select any of the buttons on the catalog screen, but for this example select a Tire catalog application. The Fitment Capture screen for the selected catalog will come up.

OPTIONS at this point:

- a. The user can click on the Back button. This will take you to the Tire grid screen where you can select a different tire size in the Tire Information grid and click on the Capture Torque button to save this tire size inflation and torque settings.
- b. Click Done and go to the Estimate Parts screen and clear the Catalog to allow the user to select a different Catalog application. (**Note:** As is normal VAST catalog functionality, if a Catalog application has already been selected for an estimate that same application will be used automatically, until the Clear button is clicked on the Catalog screen).
- c. The user can manually enter a Tire Inflation and Torque in the text fields and click Accept. This will save the manually entered Tire Inflation and Torque information for this estimate and will take you to the Parts Entry screen.
- d. The user can click on the Accept button. This will save the Perl Catalog Tire Inflation and Torque information for this estimate and will take you to the Estimate Parts screen.

Invoicing from Outstanding Estimates

Access the estimate using the Outstanding Estimate screen then select the Invoice button. If the Tire Inflation and Torque information has NOT been saved, the Pre Invoice CheckOut screen will include a requirement that reads 'TIRE INFLATION AND TORQUE FIELDS MUST CONTAIN INFORMATION'

1. Click on **Outstanding Workorder**.
2. Highlight the estimate and click on the **Invoice** button at the bottom of the screen.
3. When the Pre Invoice CheckOut screen forces the completion of the Tire Inflation and Torque fields, Click the **OK** button.
4. The Fitment Capture screen then appears **without** the Catalog button.

OPTIONS at this point:

- a. The user can manually enter the Tire Inflation and Torque data and click Accept. This saves the manually entered Tire Inflation and Lug Torque information which then prints on the Invoice. This will take you to the Invoice Payment screen.
- b. The user can click on the Back button. This will take the user back to the Pre Invoice Checkout screen and the estimate will not be allowed to be Invoiced.

The screenshot shows a software interface with the following elements:

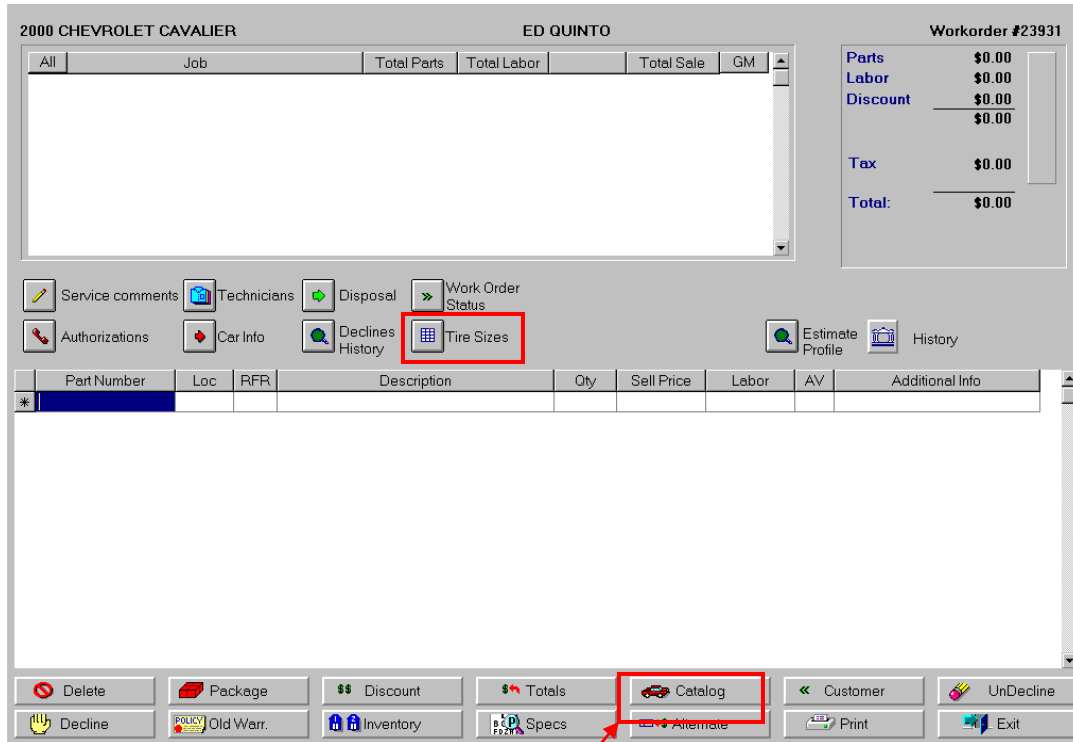
- Catalog Vehicle:** no catalog vehicle selected
- Size Selected:** n/a
- Tire Inflation:** Not Available
- Torque:** Not Available
- At the bottom, there are two buttons: a "Back" button with a left-pointing arrow and an "Accept" button with a green checkmark.

NOTE - In order to use the Tire Catalog data you will need to select "Create Invoice" from the Parts Entry exit menu or bring up the Tire Catalog from the Part Entry screen.

III. Accessing the Fitment Capture form from the Part Entry screen

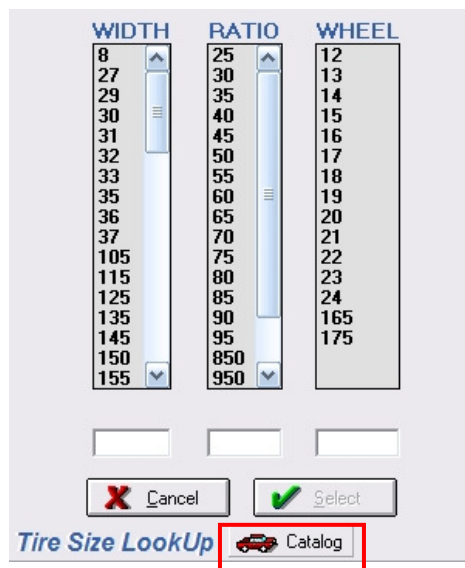
The Fitment Capture form can only be accessed from the Tire Look Up screen and ONLY when the Tire Look Up screen is accessed through the Tire Catalog.

1. On the Parts Entry Screen, click on the **Tire Sizes** button to bring up the Capture Torque screen.

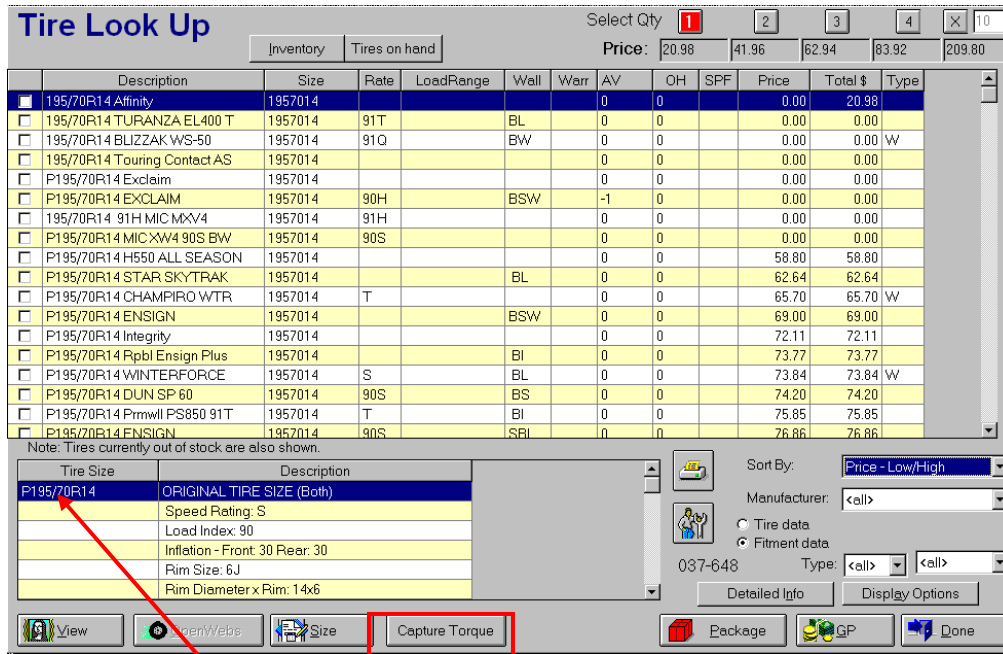


NOTE - The Fitment Capture form will also be available when you click on the **Catalog** button and select the Tire catalog.

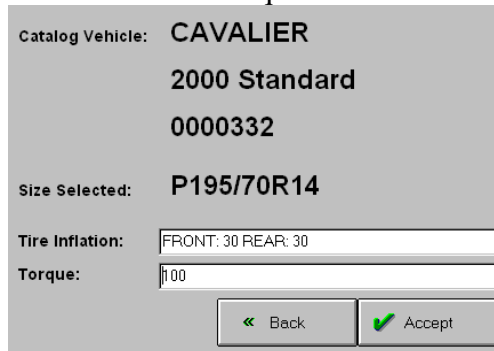
2. On the Tire Size LookUp screen click on the **Catalog** button as shown below.



- This will either go directly to the Tire Look Up screen of the last catalog accessed for this estimate. Or it will bring up the Catalog screen with the TIRE catalog selected and the user can select a catalog application which will go to the Tire Look Up screen.
- The Fitment Capture screen will NOT come up automatically. The user must access it manually.

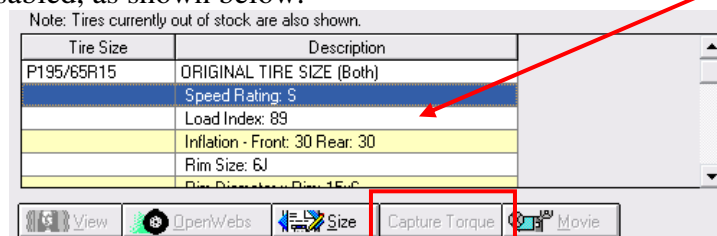


- If you highlight the Tire Size in the tire information grid, the **Capture Torque** button will become enabled. Click on the Capture Torque button. If you want, you can manually enter additional text to the Tire Inflation and Torque fields.



NOTE - Once the Tire Inflation and Torque information is accepted it will remain with the estimate. If you wish to change the Tire Inflation and Torque information, it must be changed from this screen.

NOTE - If you highlight a line in the tire information grid that does NOT have a Tire Size, the **Capture Torque** button will be disabled, as shown below.



IV. Estimate Print of the Tire Inflation and Torque information

The Tire Inflation and Torque information now print on the estimate when using a Dot Matrix or Laser printer.

Print the estimate from either the Parts Entry screen or from the Exit menu. You will see the **Tire Inflation** and **Torque** details displayed for both the Monro Laser and DOT Matrix Estimate print. The Laser print is shown below. In this example the Tire Inflation and Torque have been accepted for this estimate. If the Inflation and Torque have NOT been accepted for this estimate, then the text 'Not Available' will print to the right of Tire Inflation: and Torque.

				BETHLEHEM EXPRESS LUBE			
				256 BETHLEHEM PIKE		PAGE 1	
				BETHLEHEM,PA 18018			
				(610)666-8888			
Customer ID: 0002005118		Year: 00		Create Date: 08/19/11 16:01:07			
Name: ED QUINTO		Make: CHEVROLET		Date/Time: 08/19/11 16:27:57			
Address: 58 STAR LANE		Model: CAVALIER		Workorder #: 23931			
Address 2:		Lic No: 546ZYXC		Invoice #:			
City,State,Zip Code: NORTHAMPTON, PA, 18067		VIN: 98645643548564654		Email Address: bhartman@aftersoftna.com			
Home Phone: (610) -		Color:		PO Number:			
Work Phone: (610) 555-7777		Engine: L4-134ci 2.2L F		Fleet/Wholesale: N			
Other Phone: () -		Mileage In: 87158					
Tax Exempt #:		Mileage Out: 87158					
		Inspection Due: 12/2011					
Salesperson: F. D'NOFRO							
Service comments:							
Qty.	Part #	RFR	Loc	Description	Parts	Labor	Total
Tire Inflation: FRONT: 30 REAR: 30 Torque: 100							
95/70R14 AFFINITY							
1	037-648			195/70R14 Affinity	0.00	0.00	0.00
				1957014 0			
1	VS			VALVE STEM/CORE SERVICE	2.99	0.00	2.99
1	TDF			TIRE DISPOSAL FEE	3.00	0.00	3.00
1	FLOF			***FREE OIL CHANGE COUPON***	0.00	0.00	0.00
1	LCB			LIFETIME COMPUTER SPIN BALANCE	0.00	14.99	14.99
1	FAIWTP			Free Align Insp w/ Tire Purch	0.00	0.00	0.00
				TOTAL 195/70R14 AFFINITY:	20.98		
95/70R14 AFFINITY ENHANCEMENTS							
1	RH			ROAD HAZARD COVERAGE	9.99	0.00	9.99
				TOTAL 195/70R14 AFFINITY ENHANCEMENTS:	9.99		

V. Invoice Print of the Tire Inflation and Torque information

The Tire Inflation and Torque information will now print on the invoice when using a Dot Matrix or Laser printer.

On the Invoice screen, select a Payment Type and click on **Print**. You will see the **Tire Inflation** and **Torque** details displayed for both the Monro Laser and DOT Matrix Invoice print. The Laser print is shown below. The History Invoice will also print the Tire Inflation and Torque information.

BETHLEHEM EXPRESS LUBE			PAGE 1				
256 BETHLEHEM PIKE							
BETHLEHEM, PA 18018							
(610)666-8888							
Customer ID: 0002005118	Year: 00	Create Date: 08/19/11 13:25:18					
Name: ED QUINTO	Make: CHEVROLET	Date/Time: 08/19/11 15:23:49					
Address: 58 STAR LANE	Model: CAVALIER	Workorder #: 23929					
Address 2:	Lic No: 546ZYXC	Invoice #: 250733					
City, State, Zip Code: NORTHAMPTON, PA, 18067	VIN: 98645643548564654	Email Address: bhartman@aftersoftna.com					
Home Phone: (610) -	Color:	PO Number:					
Work Phone: (610) 555-7777	Engine: L4-134ci 2.2L F	Fleet/Wholesale: N					
Other Phone: () -	Mileage In: 82636						
Tax Exempt #:	Mileage Out: 82636						
	Inspection Due: 12/2011						
Salesperson: F. D'NOFRO							
Service comments:							
FINAL INVOICE APPROVAL:							
Qty.	Part #	RFR	Loc	Description	Parts	Labor	Total
Tire Inflation: FRONT: 30 REAR: 30 Torque: 100							
195/70R14 AFFINITY							
1	OP/037-648			195/70R14 Affinity 1957014 0	82.48	0.00	82.48
	DOT Numbers: 03256520309						
1	VS			VALVE STEM/CORE SERVICE	2.99	0.00	2.99
1	TDF			TIRE DISPOSAL FEE	3.00	0.00	3.00
1	FLOF			***FREE OIL CHANGE COUPON***	0.00	0.00	0.00
1	LCB			LIFETIME COMPUTER SPIN BALANCE	0.00	14.99	14.99
1	FAIWTP			Free Align Insp w/ Tire Purch	0.00	0.00	0.00
TOTAL 195/70R14 AFFINITY:					103.46		

VI. Creating Phone Quotes and Over the Counter Estimates

VAST will not require the entry of the Tire Inflation and Torque Information when creating a Phone Quote or when creating an Over the Counter estimate