



**SETUP  
TIRE COLOR CODING AND FILTERING  
VAST Enterprise Retail**

*The material in this document is applicable for ALL VAST Enterprise Retail versions and for ALL VAST Enterprise Multi-Store versions.*

**Table of Contents**

**INTRODUCTION.....3**

**1. VAST MAINTENANCE – SETUP REQUIREMENTS.....3**

- a. Control File – Additional Tab .....3
- b. Account Codes Maintenance.....4
- c. Tire Grid Maintenance .....6
- d. Pricing: Ad Event Maintenance – SKU Level .....7
- e. Tire Color Code Maintenance .....9

**2. COLOR CODE LOGIC .....10**

**3. VAST POINT OF SALE – TIRE WINDOW ENHANCEMENTS .....11**

- a. Filtering Lines To Show in Tire Window .....11
- b. Tire Column Window Changes in Phone Quote.....12
- c. Using Color Code Tires in Look Up Window .....12

## INTRODUCTION

The following section will describe the enhanced changes to Color Code Tires in the Tire Selling Window. The necessary changes to **VAST Enterprise POS** will be described as well as the new Maintenance functions.

The Maintenance functions will discuss the ability to set colors by **SKU** in which all tires within a certain account code or size are displayed. An additional column has been added to the grid to hold the color selection. A new Maintenance Screen has been created, called **Tire Color Code Maintenance**, to assign descriptions to each of the 10 available colors.

The **VAST POS** Tire Selling Window has also been changed so that the Tires will be displayed in the color that was assigned to them in VAST Maintenance. In addition, a right click menu option will provide the user the ability to see each of the tire color-codes meaning.

## 1. VAST MAINTENANCE – SETUP REQUIREMENTS

### a. Control File – Additional Tab

For Tire Color Codes to work on Estimates and Phone Quotes the user must update the 'Control File' on the 'Additional' Tab. This Tab includes the controls to use SKU Level Pricing that is also associated with Color Coding.

The screenshot shows the 'Control File' dialog box with the 'Additional' tab selected. The 'Using Sku Level Pricing' and 'Using Color Code Filtering' checkboxes are circled in red. Other visible options include 'Detailed Cores', 'Using Telephone Scripts', 'Using Text Messaging', 'Use Reverse Phone Lookup', 'Shop Hours', 'Number of Bays', 'Using Oil Labels', 'Oil Change Sticker Defaults', 'Security Level Captions', 'Using MPI', 'Track Deleted Items', and 'Select Tire Size Print Format'.

## Field Definitions

Field Name	Description
Using SKU Level Pricing	This field when flagged activates the SKU Level Pricing in the Ad Event Pricing Maintenance screen.
Using Color Code Filtering	This field when flagged activates the Color Code Filtering on the Tire Lookup Window in VAST Point of Sale. *Note: The user must still determine which colors are displayed and within either In Store Quotes or Phone Quotes.

**\*NOTE\*** - You **MUST** Close out of VAST Maintenance and then **REOPEN** it before continuing, so that your changes will take effect.

### b. Account Codes Maintenance

Two new fields have been added to the Account Codes screen, Tire Information Tab in VAST Maintenance called “**Inactive Tires: Hide Until Display All is Clicked**” and “**Assign Color Code To Tire Line**”. These are necessary to support tire display functionality in the various VAST point of sale tire display windows.

The screenshot shows the 'Account Codes' window with the 'Tire Information' tab selected. The 'Inactive Tires: Hide Until Display All is Clicked' checkbox is highlighted with a red circle. Below it, the 'Assign Color Code To Tire Line' field is also highlighted with a red rectangle. The interface includes various input fields and a 'Write to Master' button at the bottom right of the main form area.

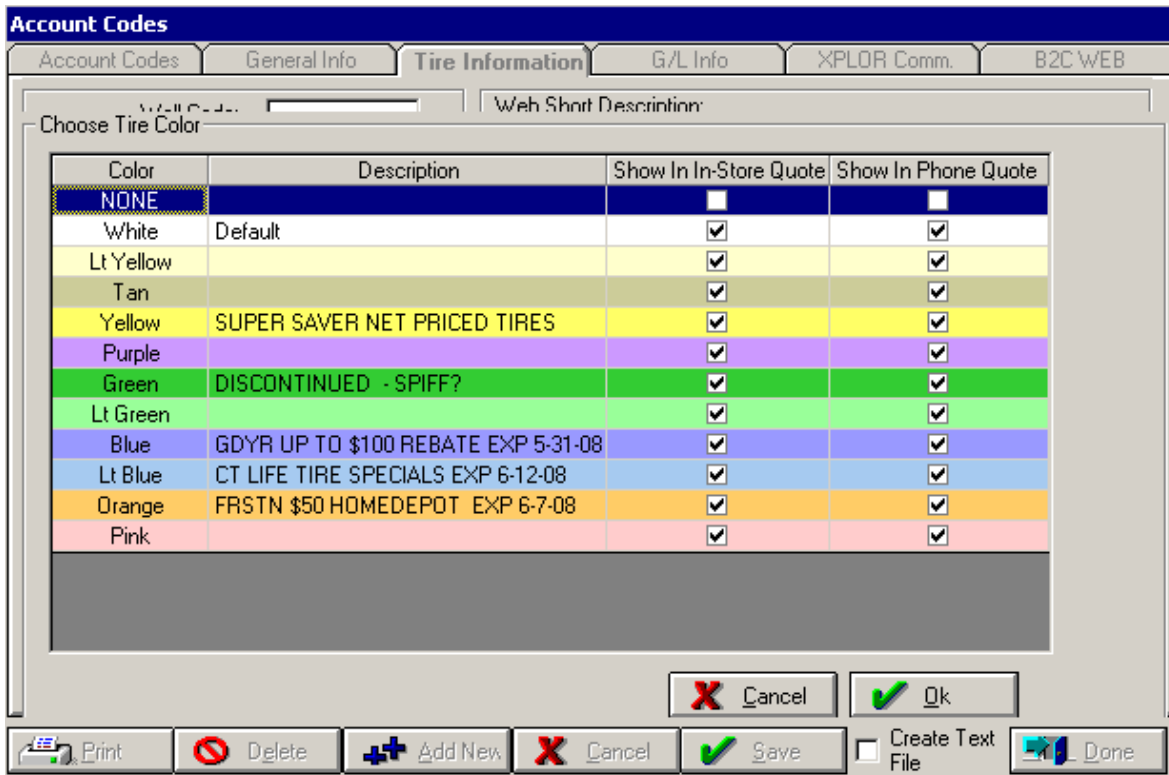
Field Definitions

**Field Name**                      **Description**

Inactive Tires: Hide Until Display All is Clicked      When this is checked, tires in this account code will not be displayed on the initial Tire Selling screen. This field is defaulted to “**false**” (**not checked**) so all tires will be displayed unless changed.

Assign Color Code To Tire Line      This field assigns a color to a tire line. Click on the Ellipsis (...) box to the right of the field to get a pull down list that will show the color, the description assigned to the color, and the In-store flag setting. See Below.  
 \***Note:** It is not necessary to perform a Write To Master after changing this setting. Color Code Assignments that are made at the SKU level in Ad Event Maintenance override this Account Code setting.

Refer to *Filter Lines* to show in Tire Window.



Field Definitions

Field Name	Description
Color	These are the available colors to select from. This field is defaulted to 'None'.
Description	This is the Color Code description setup in the Tire Color Code Maintenance Screen.
Show In In-Store Quote	This is an informational field displaying which color codes are shown in an In-Store Quote. Refer to Tire Color Code Maintenance on how to update.
Show In Phone Quote	This is an informational field displaying which color codes are shown in a Phone Quote. Refer to Tire Color Code Maintenance on how to update.
Cancel	This button when selected will 'Cancel' any changes made to this screen.
Ok	This button saves changes and returns user back to the Tire Information Tab.

**c. Tire Grid Maintenance**

The **Tire Grid Maintenance** screen has been changed to allow more flexibility. The user now has the ability to distinguish which columns will be visible on the Tire Lookup Window Grid for both Estimates and Phone Quotes. **\*Note:** *The order of the columns remains pre-defined.*

**Tire Grid Maintenance**

Column Name	Display Name	Visible On Estimate Grid	Estimate Grid Sort Order	Visible On Phone Quote	Phone Quote Grid Sort Order	Show On Wholesale Grid	Wholesale Grid Sort Order
Tire Vendor	Tire Vendor	<input type="checkbox"/>		<input type="checkbox"/>		<input checked="" type="checkbox"/>	
Part Number	Part Number	<input type="checkbox"/>		<input type="checkbox"/>		<input checked="" type="checkbox"/>	
Tire Description	Tire Description	<input checked="" type="checkbox"/>	1	<input checked="" type="checkbox"/>	1	<input checked="" type="checkbox"/>	
Tire Search Size	Tire Search Size	<input checked="" type="checkbox"/>	2	<input checked="" type="checkbox"/>	2	<input type="checkbox"/>	
Tire Speed Rating	Tire Speed Rating	<input checked="" type="checkbox"/>	3	<input checked="" type="checkbox"/>	3	<input type="checkbox"/>	
Tire Type	Tire Type	<input checked="" type="checkbox"/>	14	<input checked="" type="checkbox"/>	14	<input type="checkbox"/>	
Tire Walls	Tire Walls	<input checked="" type="checkbox"/>	5	<input checked="" type="checkbox"/>	5	<input type="checkbox"/>	
Tire WarrCode	Tire WarrCode	<input checked="" type="checkbox"/>	6	<input checked="" type="checkbox"/>	6	<input type="checkbox"/>	
Tire On Hand	Tire On Hand	<input checked="" type="checkbox"/>	8	<input checked="" type="checkbox"/>	8	<input type="checkbox"/>	
Tire Spiff	Tire Spiff	<input checked="" type="checkbox"/>	9	<input checked="" type="checkbox"/>	9	<input type="checkbox"/>	
Tire Price	Tire Price	<input checked="" type="checkbox"/>	10	<input checked="" type="checkbox"/>	10	<input checked="" type="checkbox"/>	
Tire Package Price	Tire Package Price	<input type="checkbox"/>		<input type="checkbox"/>		<input type="checkbox"/>	
Tire Total Price	Tire Total Price	<input checked="" type="checkbox"/>	11	<input checked="" type="checkbox"/>	11	<input type="checkbox"/>	
Account Code	Account Code	<input type="checkbox"/>		<input type="checkbox"/>		<input type="checkbox"/>	
Tire Cost	Tire Cost	<input checked="" type="checkbox"/>	12	<input checked="" type="checkbox"/>	12	<input checked="" type="checkbox"/>	
Tire Gross Profit	Tire Gross Profit	<input checked="" type="checkbox"/>	13	<input checked="" type="checkbox"/>	13	<input type="checkbox"/>	
Tire Grid Index	Tire Grid Index	<input type="checkbox"/>		<input type="checkbox"/>		<input type="checkbox"/>	
Tire Lead Price	Tire Lead Price	<input type="checkbox"/>		<input type="checkbox"/>		<input type="checkbox"/>	

Create Text File

## Field Definitions

Field Name	Description
Column Name	These are the available fields the user is allowed to choose for display on the Tire Look Up Window Grid. *Note: Since the tire selected field will always be selected it is not included in the Tire Maintenance Screen.
Visible On Estimate Grid	Clicking the column "Visible on Estimate Grid" will toggle whether that column will be displayed in the Tire Lookup window when accessed from the Vast Estimate Screen and In Store Quotes. *Note: If the Tire Lookup Window is accessed while within an In Store Quote workflow, it will display columns based upon the "Estimate" column in Tire Grid Maintenance.
Estimate Grid Sort Order	Enter sequential numbers beginning with '1', which will provide the placement of each field displayed in the Tire Look Up window when accessed from the VAST Estimate screen and In Store Quotes.
Visible On Phone Quote Grid	Clicking the column "Visible on Phone Quote Grid" will toggle whether that column will be displayed in the Tire Look Up window when accessed from the Vast Phone Quote Screen.
Phone Quote Grid Sort Order	Enter sequential numbers beginning with '1', which will provide the placement of each field displayed in the Tire Look Up window when accessed from the VAST Phone Quote screen.
Show On Wholesale Grid	Clicking the column "Show On Wholesale Grid" will toggle whether that column will be displayed in the Tire lookup window when accessed from the VAST Tire Wholesale screen.
Wholesale Grid Sort Order	Enter sequential numbers beginning with '1', which will provide the placement of each field displayed in the Tire Look Up window when accessed from the VAST Tire Wholesale screen.
Cancel	This button will <b>'Cancel'</b> changes made to this screen.
Save	This button will <b>'Save'</b> any changes made to this screen.
Done	Select this button to exit the Tire Grid Maintenance screen.

#### d. Pricing: Ad Event Maintenance – SKU Level

New columns have been added at the end of the Ad Event Pricing Maintenance screen to assign a color to each individual tire. The ability to select multiple rows will exist in this grid is also available.

**Sku Level Ad Event Pricing And Tire Flags**

List of Companies Promotional Details

Search By Account Code Search By Size Size: 1856015  
Acct Code: 73928

Promo Price	Selling Price	Start Date (Price)	End Date (Price)	Show In Phone Quote Screen	Color	Start Date (Color & Show)	End Date (Color & Show)
65.89	0.00	6/8/2009	6/30/2009	<input checked="" type="checkbox"/>	Blue	6/8/2009	6/30/2009
65.89	0.00	6/8/2009	6/30/2009	<input checked="" type="checkbox"/>	Blue	6/8/2009	6/30/2009
65.89	0.00	6/8/2009	6/30/2009	<input checked="" type="checkbox"/>	Blue	6/8/2009	6/30/2009
65.89	99.79	6/8/2009	6/30/2009	<input checked="" type="checkbox"/>	Blue	6/8/2009	6/30/2009
65.89	0.00	6/8/2009	6/30/2009	<input checked="" type="checkbox"/>	Blue	6/8/2009	6/30/2009
65.89	98.82	6/8/2009	6/30/2009	<input checked="" type="checkbox"/>	Blue	6/8/2009	6/30/2009
65.89	0.00	6/8/2009	6/30/2009	<input checked="" type="checkbox"/>	Blue	6/8/2009	6/30/2009
65.89	0.00	6/8/2009	6/30/2009	<input checked="" type="checkbox"/>	Blue	6/8/2009	6/30/2009
65.89	0.00	6/8/2009	6/30/2009	<input checked="" type="checkbox"/>	Blue	6/8/2009	6/30/2009
65.89	0.00	6/8/2009	6/30/2009	<input checked="" type="checkbox"/>	Blue	6/8/2009	6/30/2009
65.89	89.89	6/8/2009	6/30/2009	<input checked="" type="checkbox"/>	Blue	6/8/2009	6/30/2009
65.89	0.00	6/8/2009	6/30/2009	<input checked="" type="checkbox"/>	Blue	6/8/2009	6/30/2009

With focus in the grid, hold down the Ctrl key and press A to select all rows.

Copy To... Add New Delete Cancel Save

0001 - AFS Tire\_Auto Create Text File Done

Field Definitions

Field Name	Description
Promo Price	Enter the desired amount to be used as a promotional price for a select period of time. Right click options have been added to the column heading:

Unit Selling Price

Over Cost

% Over Cost:   \$ Over Cost:

Under List

% Under List:   \$ Under List:

Over List

% Over List:   \$ Over List:

Specific Dollar Amount:

Set Cents To

Cancel Done

On this screen you can choose any one of the functionalities to make the changes to the List Price for your Tire parts. Click Done when finished.

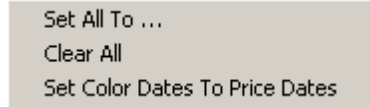
Show In Phone Quote Screen This field is a checkbox. Right click options have been added to the column heading to:

Check All  
Uncheck All

**Color** This column will contain a drop down with the 10 predefined colors in it. A right click on the Color column heading will give the user the option to set all or set selected rows to a certain color.



**Start Date (Color & Show)** This is the beginning date for the Show In Phone Quote flag as well as the display color. Both Start Date and End Date are required in this grid.



**End Date (Color & Show)** This is the date the Color Code will stop showing in a Phone Quote. *\*Note: If you want a particular tire to be shown in the phone quote screen with the selected color “forever”, set the End Date to something way off in the future.*

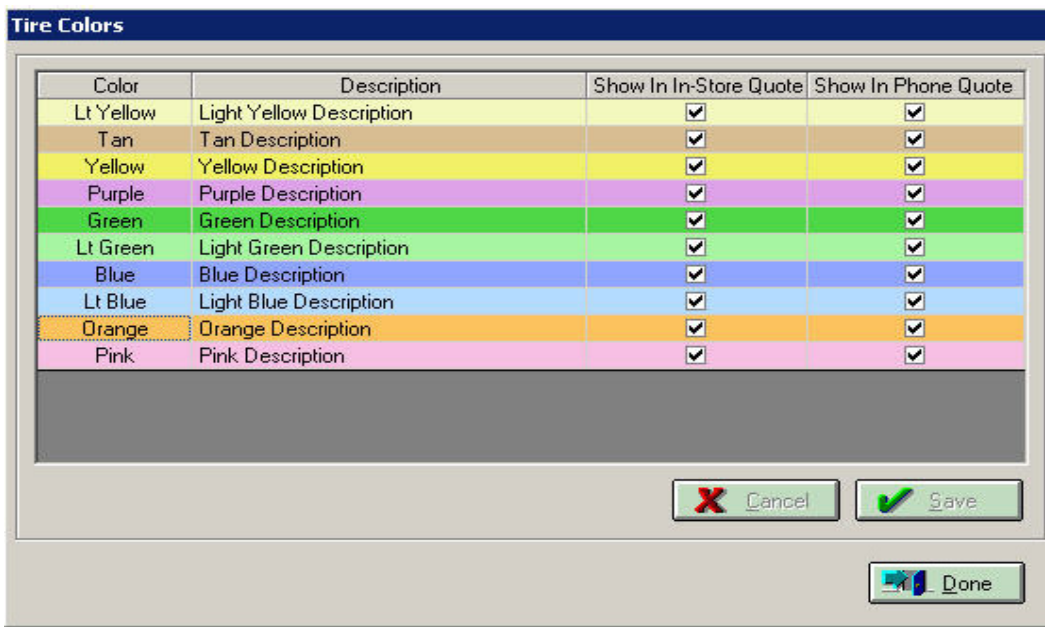
**Cancel** Select this button to ‘**Cancel**’ changes made to this screen.

**Save** This button ‘**Saves**’ any changes made to this screen.

**Done** Once all changes have been made choose ‘**Done**’ to exit the screen.

**e. Tire Color Code Maintenance**

A new maintenance screen has been created in VAST Maintenance to assign descriptions to the colors being used. These descriptions will be available for viewing on the Tire Selling Window.



**Field Definitions**

<b>Field Name</b>	<b>Description</b>
Color	These are all of the available colors to choose from for display in Estimates and Quotes in the Tire Lookup Window.
Description	This is the description of the Tire Color Code. This description field is used to describe that specific color code.

---

Show In In-Store Quote	This column determines which color codes are displayed during an In-Store Quote on the Tire Look Up Window.
Show In Phone Quote	This column determines which color codes are displayed during a Phone Quote on the Tire Look Up Window.
Save	This button will ' <b>Save</b> ' any changes that have been made to this screen.
Cancel	This button will ' <b>Cancel</b> ' any changes that have been made since the last save.
Done	When the ' <b>Done</b> ' button is clicked The user will be taken back to the main menu.
Create Text File	If the ' <b>Create Text File</b> ' check box is selected when the Done button is clicked, a file will be created to send this information down to the shops. This check box is only visible at the office.

## 2. COLOR CODE LOGIC

### **Tire Selling Window and the Phone Quote Screen logic will work as follows:**

- VAST first looks to the SKU and Store Specific Color Coding Data Table to display the appropriate tires and colors (tire SKU must have a color).
- If the SKU does not have a color associated with it in the separate SKU level table, then VAST will look to the Account Code for each item and check the new color flag in the Account Code table.

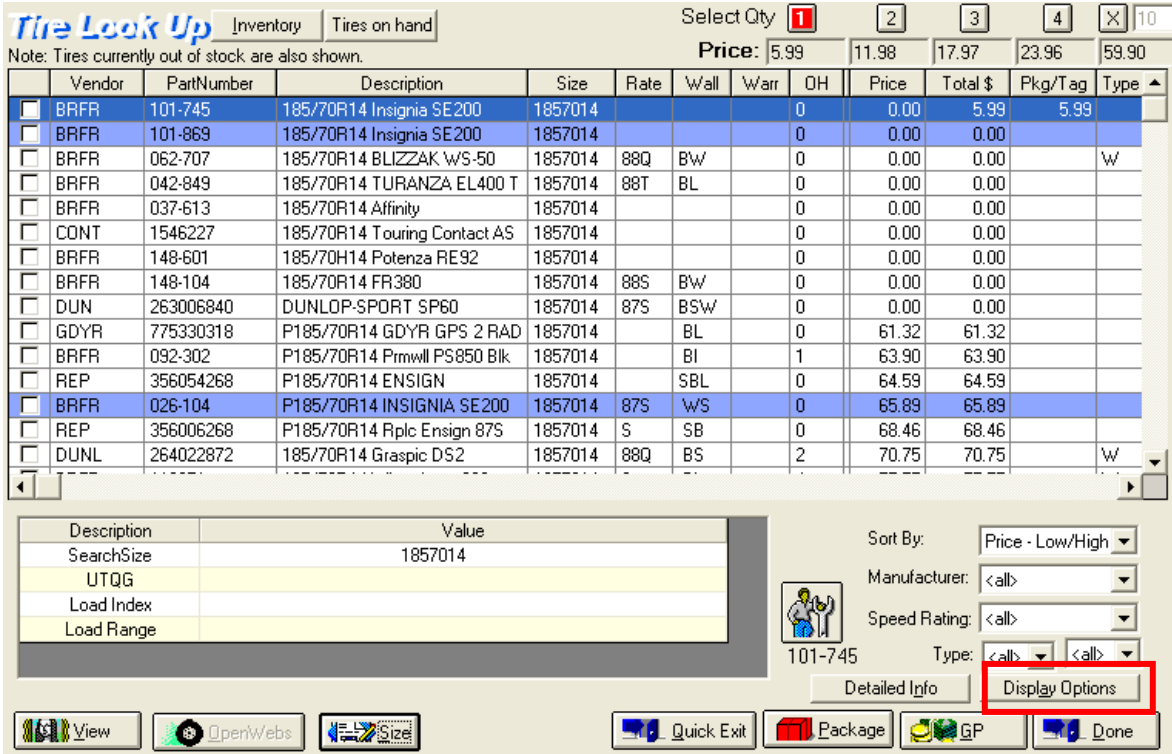
### **Phone Quote logic will work as follows:**

- First look to SKU specific phone quote flag in the Ad Event Table.
- If no SKU specific flag, then look to color in Account Code Table and flag for Show In Phone Quote.

### 3. VAST POINT OF SALE – TIRE WINDOW ENHANCEMENTS

#### a. Filtering Lines To Show in Tire Window

The Tire Look Up window has been enhanced to limit the tire lines initially displayed. Refer to the Account Codes Maintenance section on how to set this feature up. A new button called ‘**Display Options**’ has also been added to the Tire Look Up Window to toggle between displaying all tires or just the ones that are not marked as “Hidden.”



When the ‘**Display Options**’ button is clicked, the user will be presented a menu with the possible filtering options available. In Store Quotes will display:

- Display In Store Tires
- Display Non-In Store Tires
- Display All Tires
- Display Color Coded Tires

While within a Phone Quote, the filtering options will change to:

- Display Promo Tires
- Display Non-Promo Tires
- Display Color Coded Tires

### b. Tire Column Window Changes in Phone Quote

VAST has allowed the layout in the Tire Look Up Screen to be different between Estimates and Quotes. Refer to the Tire Grid Maintenance screen on how to select fields. \*Note: The Tire Look Up screen has also been altered to display the tire-selected column as the first column in the grid for both Estimates and Phone Quotes.

Note: Tires currently out of stock are also shown.

Vendor	PartNumber	Description	Size	Rate	Wall	Warr	OH	Price	Total \$	Pkg/Tag	Type
KELL	356102009	KLY Charger	1857014				0	86.01	86.01		
BRFR	113671	185/70R14 Winterforce 88S	1857014	S	BI		4	77.55	77.55		W
DUNL	264022872	185/70R14 Graspic DS2	1857014	88Q	BS		2	70.75	70.75		W
REP	356006268	P185/70R14 Rplc Ensign 87S	1857014	S	SB		0	68.46	68.46		
BRFR	026-104	P185/70R14 INSIGNIA SE200	1857014	87S	WS		0	65.89	71.88	5.99	
REP	356054268	P185/70R14 ENSIGN	1857014		SBL		0	64.59	64.59		
BRFR	092-302	P185/70R14 Prmwll PS850 Blk	1857014		BI		1	63.90	63.90		
GDYR	775330318	P185/70R14 GDYR GPS 2 RAD	1857014		BL		0	61.32	61.32		
BRFR	101-745	185/70R14 Insignia SE200	1857014				0	0.00	0.00		
BRFR	101-869	185/70R14 Insignia SE200	1857014				0	0.00	0.00		
BRFR	042-849	185/70R14 TURANZA EL400 T	1857014	88T	BL		0	0.00	0.00		
BRFR	148-104	185/70R14 FR380	1857014	88S	BW		0	0.00	0.00		
BRFR	148-601	185/70H14 Potenza RE92	1857014				0	0.00	0.00		
CONT	1546227	185/70R14 Touring Contact AS	1857014				0	0.00	0.00		
BRFR	062-707	185/70R14 BLIZZAK WS-50	1857014	88Q	BW		0	0.00	0.00		W

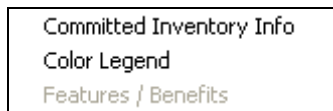
Description	Value
SearchSize	1857014
UTQG	560 AB
Load Index	
Load Range	

Sort By: Price - High/Low  
 Manufacturer: <all>  
 Speed Rating: <all>  
 026-104 Type: <all> <all>

Buttons: View, OpenWebs, Size, Quick Exit, Package, GP, Done

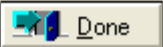
### c. Using Color Code Tires in Look Up Window

The Tire Look Up screen has been modified to display the tires in the colors assigned in Account Code Maintenance and Ad Event Pricing at the SKU Level. A new item was added on a right click of the grid to display a legend of the colors.



When 'Color Legend' is selected the screen displays the descriptions assigned to the colors in Tire Color Code Maintenance.

Color	Description
WHITE	Default
Lt Yellow	
Tan	
Yellow	
Purple	Spec Pricing BRFR for June 2009
Green	
Lt Green	Spec Pricing 2358017
Blue	
Lt Blue	

 Done

**\*NOTE\*** - There is no sorting mechanism of tires by color.