



**MIDAS AZ iSHOP CATALOGS
SETUP AND USE**

VAST Enterprise

The material in this document is applicable for VAST Enterprise Retail version 6.5 and Greater.

TABLE OF CONTENTS

REQUIREMENTS..... 3

INSTALLING YOUR AUTOZONE iSHOP CATALOGS..... 4

- 1. SETTING UP THE CATALOG ON THE SERVER.....4**
- 2. SETTING UP THE CATALOG ON THE WORKSTATIONS5**
- 3. CREATING A LINE FILTER.....6**

CONFIGURING THE AUTOZONE CATALOGS..... 7

- 1. DISABLING PART TYPES.....8**
- 2. ASSIGNING BANG PARTS.....9**
- 3. SETTING UP CUSTOM CATALOG VIEWS.....12**

USING YOUR AUTOZONE CATALOGS IN VAST 14

- 1. EXAMPLE OF USING THE AUTOZONE CATALOG.....15**
- 2. VIEWING THE EXHAUST IMAGES.....17**
- 3. VIEWING SPECS18**

REQUIREMENTS

- 1. VAST POINT OF SALE VERSION 6.5.x OR HIGHER, INSTALLED WITH AN AUTOZONE iSHOP REGISTRATION CODE**

****NOTE:** The following items are required by Midas/Autozone in order to use the iShop Catalogs. If you have any questions or problems regarding these items, please contact Midas.

- 2. A DVD-ROM DRIVE (DIFFERENT THAN A CD ROM DRIVE)**
- 3. 10 GB FREE SPACE ON YOUR HARD DRIVE FOR THE CATALOGS.**
- 4. AUTOZONE iSHOP CATALOG CD AND INSTALLATION INSTRUCTIONS PROVIDED TO YOU BY AUTOZONE**

INSTALLING YOUR AUTOZONE iSHOP CATALOGS

Installation instructions have been provided to you by **AUTOZONE** for your **AUTOZONE iSHOP CATALOGS**. Please refer to the **Installation and Quick Reference Guide for the AZ Parts Catalog** to complete the installation.

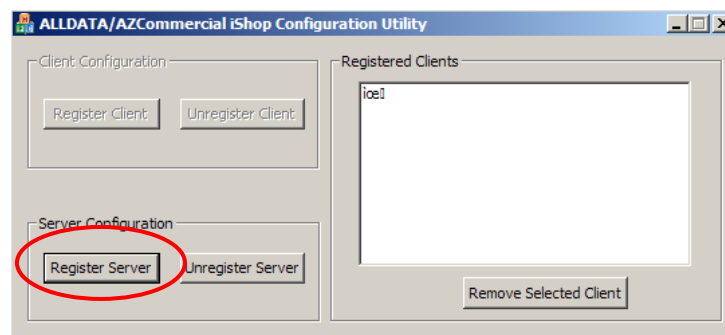
****NOTE: IF YOU HAVE ANY PROBLEMS WITH THE INSTALLATION OF YOUR CATALOGS OR ANY OF THE FOLLOWING STEPS, PLEASE CONTACT MIDAS.**

After installing the AutoZone catalog, the location of the catalog server has to be set. Links to the catalog from workstations must also be provided. This process is outlined in the AutoZone documentation, but the steps are provided below as a review. If you have already completed these steps, you do not need to repeat them.

1. SETTING UP THE CATALOG ON THE SERVER

This must be done on the system that physically holds the AutoZone Parts Catalog.

- a. Click on the **START BUTTON**.
- b. Go to **PROGRAMS**.
- c. Go to **ALLDATA**.
- d. Go to **ALLDATA iSHOP CONFIGURATION**. You will see the screen shown below.

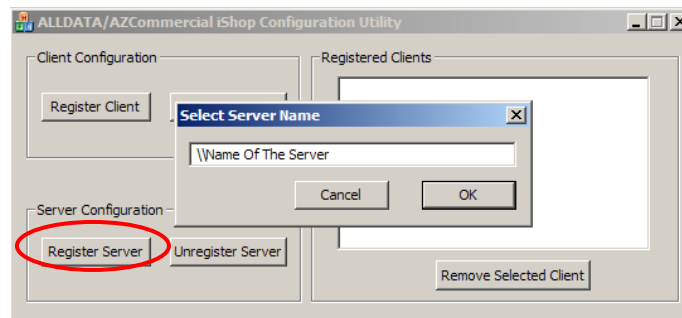


- e. Click on the **REGISTER SERVER** button. This will make the program perform the registration function and return to the screen. You should see the name of your server appear in the “Registered Clients” box.
- f. Then, click the **X** in the top right hand corner of the screen to exit.

2. SETTING UP THE CATALOG ON THE WORKSTATIONS

This must be done on **EACH WORKSTATION** that will be using the catalog.

- a. Click on the **START BUTTON**.
- b. Go to **PROGRAMS**.
- c. Go to **ALLDATA**.
- d. Go to **ALLDATA iSHOP CONFIGURATION**. You will see the screen shown below.



- e. Click on the **REGISTER CLIENT** button. The program will display a pop-up window, where you will need to enter the name of the server where the catalogs were installed.

For Example: \\SERVER1

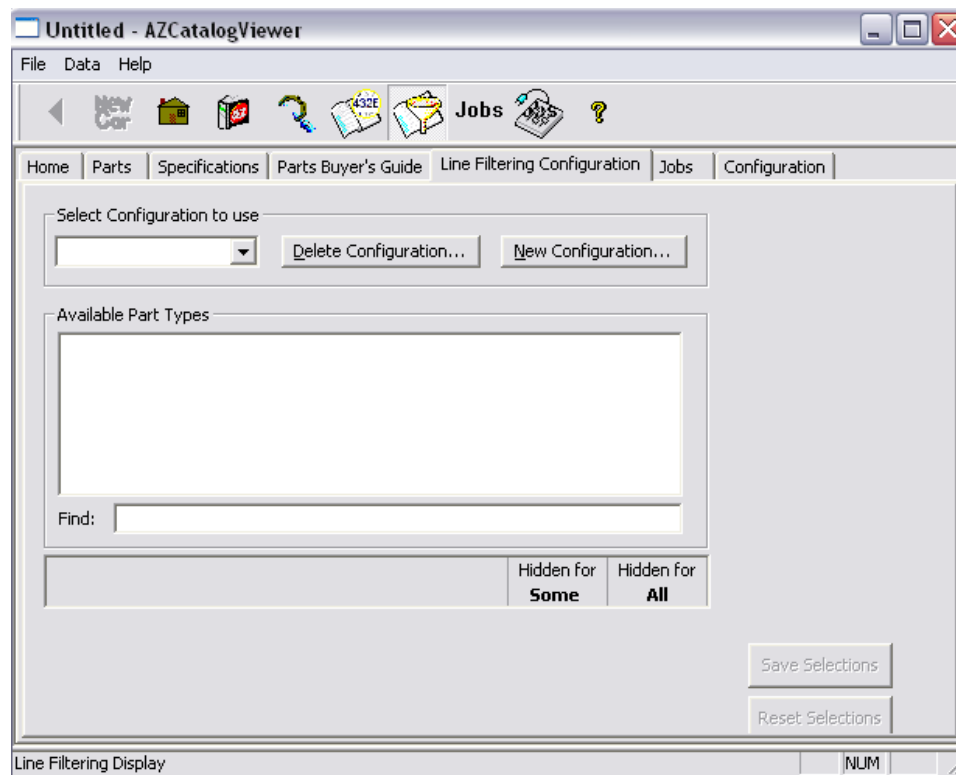
Make sure you enter the two backslashes before the name of the server. This key is found above the **ENTER** key on your keyboard.

- f. After you type the name, click **OK**. The program will perform the registration and return you to the previous screen.
- g. Click the **X** in the top right hand corner to exit the screen.

3. CREATING A LINE FILTER

A line filter in AutoZone allows you to control what catalog lines will be displayed for the application selected. Please review the “**CUSTOMIZING THE CATALOG**” section in the **AUTOZONE DOCUMENTATION** for a broader discussion of line filtering.

- a. Click on the **START BUTTON**.
- b. Go to **PROGRAMS**.
- c. Go to **ALLDATA**.
- d. Go to **AUTOZONE CATALOG VIEWER**.
- e. Then click on the **LINE FILTERING CONFIGURATION** tab. You will see a screen similar to the one shown below.



- f. Click on the **NEW CONFIGURATION** button. A window will appear for you to enter a name for the configuration.
- g. Go through the part types and disable any catalogs you **DO NOT WISH TO SEE** as part of your **PRIMARY CATALOG**.
- h. When you are finished, click **SAVE SELECTIONS**.

****NOTE:** Please review the **AUTOZONE DOCUMENTATION** for other options that are available in the AutoZone catalog viewer.

IF YOU HAVE PROBLEMS WITH ANY OF THE ABOVE STEPS, PLEASE CONTACT MIDAS FOR ASSISTANCE.

CONFIGURING THE AUTOZONE CATALOGS

The steps to create a **CATALOG SETUP** in VAST are based on the current set of **MIDAS SALES CLASSES**. If you do not agree with this setup, you can alter these catalog groupings yourself. The information below will show you how to manipulate all of the catalog settings, so you can change them at any time if you wish to do so.

To make any changes to the **AUTOZONE CATALOGS** in VAST, you will use the **AUTOZONE PART TYPE ASSOCIATION** in **VAST MAINTENANCE**. This screen allows you to do the following:

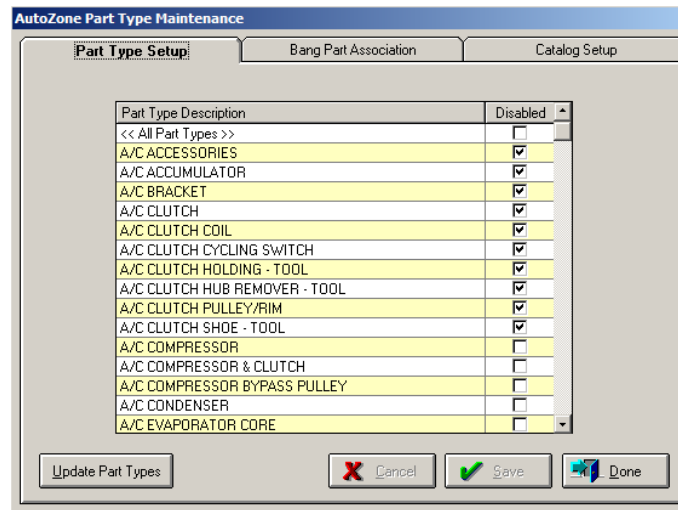
- Control **WHAT PARTS ARE DISPLAYED** when the full AutoZone Catalog is selected.
- Associate **!BANG PARTS in VAST** with AutoZone Part Type Descriptions.
- Create **AUTOZONE CATALOG VIEWS** to be used in the Vast POS catalog part lookup.

****NOTE: THIS SECTION OF THE SETUP HAS ALREADY BEEN COMPLETED FOR YOU. THE STEPS IN THIS SECTION OF THE DOCUMENT SHOULD ONLY BE FOLLOWED IF YOU WANT TO MAKE ANY CHANGES TO THE EXISTING CONFIGURATION.**

1. DISABLING PART TYPES

To Control what **PARTS** are displayed in VAST when the **FULL AUTOZONE CATALOG** is selected, please perform the following steps:

- a. Open **MAINTENANCE**.
- b. Go to **AUTOZONE PART TYPE ASSOCIATION**.
- c. The screen will open to the **PART TYPE SETUP** screen, shown below. This screen allows you to control what **PART TYPES** will be displayed when the **AUTOZONE FULL CATALOG** is accessed in VAST. When a **PART TYPE** is **DISABLED**, it will not be displayed in VAST. The main purpose of this function is to minimize the parts that are displayed during a **FULL LOOKUP**, so you have less to scroll through. Therefore, it is recommended that if there are items that you do not usually use, disable them by clicking in the **DISABLE** box.



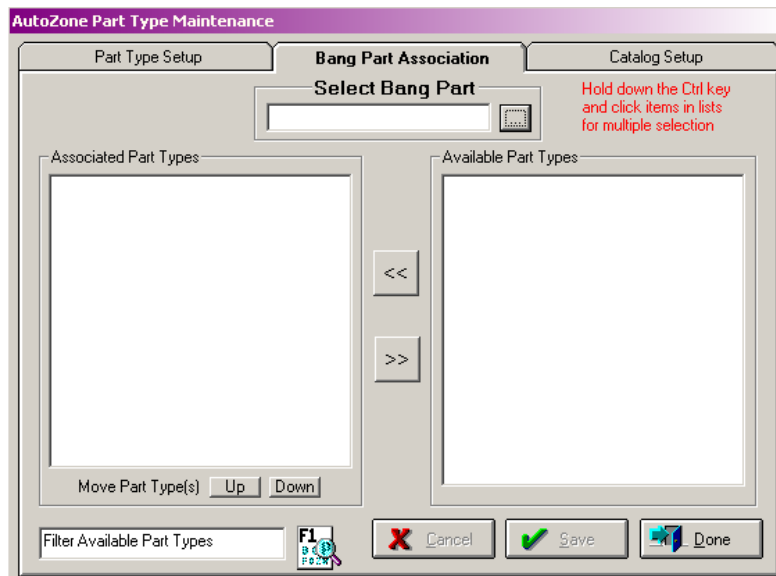
- d. When you are finished, click **SAVE**.
- e. Then click the **UPDATE PART TYPES** button on the bottom of the screen. You will see a message box appear letting you know that it is complete. Click **OK** on this message box.
- f. Then click **DONE** to leave the screen.

2. ASSIGNING BANG PARTS

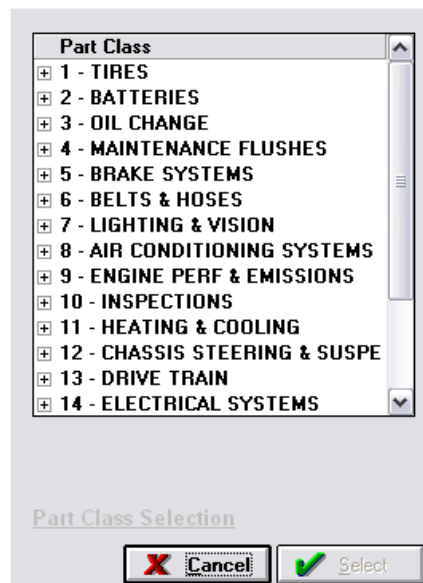
The purpose of this screen is to provide for the association of **!BANG PARTS** in **VAST** with **AUTOZONE PART TYPE** descriptions. This association is necessary for **VAST** to be able to perform alpha-text searches for parts. It also provides the linkage for building **CUSTOM** views of parts within Vast from the AutoZone catalog.

If you would like to make changes to the setup, please follow the steps listed below:

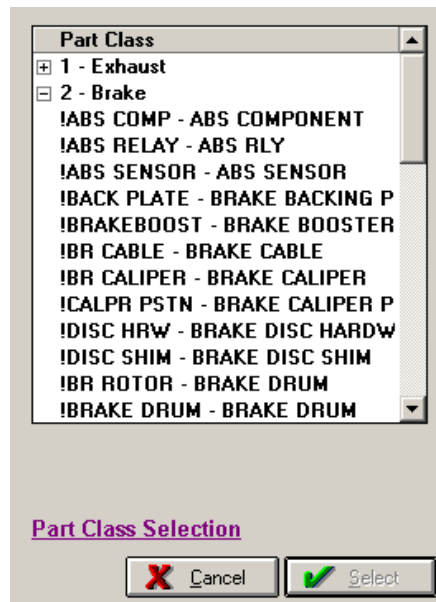
1. Open **MAINTENANCE**.
2. Go to **AUTOZONE PART TYPE MAINTENANCE**. Click on the **BANG PART ASSOCIATION TAB**. You will see a screen similar to the one shown below.



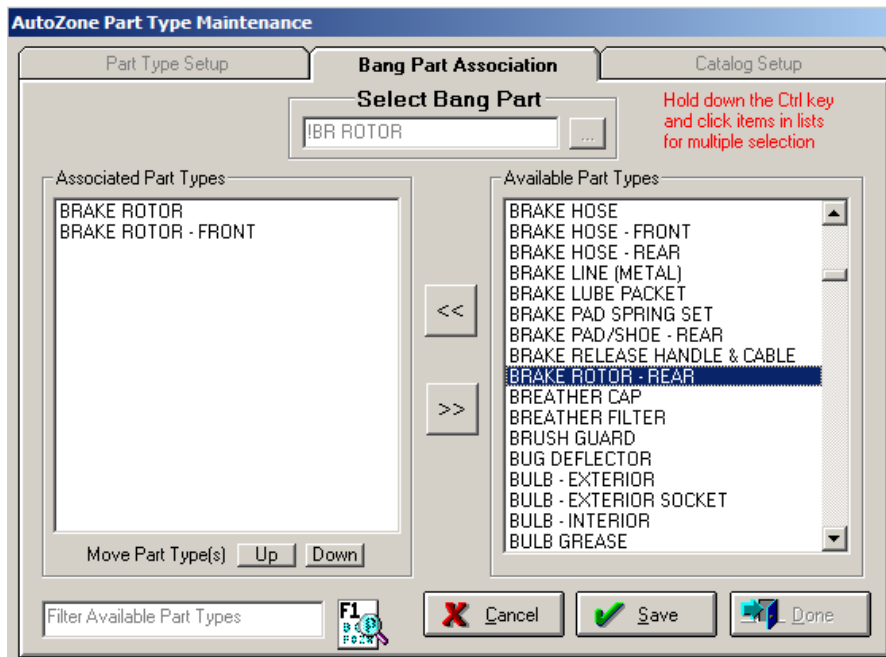
3. Click on the **ELLIPSIS** button next to the “**SELECT BANG PART**” textbox. You will see a dropdown list of all of the **SALES CLASSES**, as shown below.



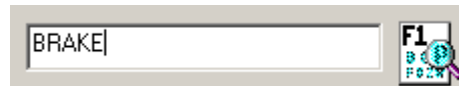
4. **DOUBLE CLICK** the sales class you want, and you will see the **!BANG PARTS** drop down window appear, as shown below. Highlight a **!BANG PART** and then click **SELECT**. This will return you to the previous screen.



5. Under the **AVAILABLE PART TYPES**, you will see a list of all the **PART TYPES** in the system. You need to scroll through this list, and find the **PART TYPES** that you want to associate with the **VAST !BANG PART**.



6. You can **FILTER** this list by using the **F1 BUTTON** on the bottom of the screen. For example, if the word "BRAKE" is typed into the box and **F1** is pressed, only those part types that have the word "BRAKE" in them will be displayed.



7. **HIGHLIGHT** the part or parts you want to associate, and click the **DOUBLE ARROW** button in the middle of the screen that points to the **LEFT**. This will move the **PART TYPE** to the **ASSOCIATED PART TYPES** window.



8. Once you have **ASSOCIATED** all the **PART TYPES** to the **!BANG PART**, click the **SAVE** button.
9. Repeat the **ABOVE STEPS** until you have associated all of your **PART TYPES** with **VAST !BANG PARTS**.

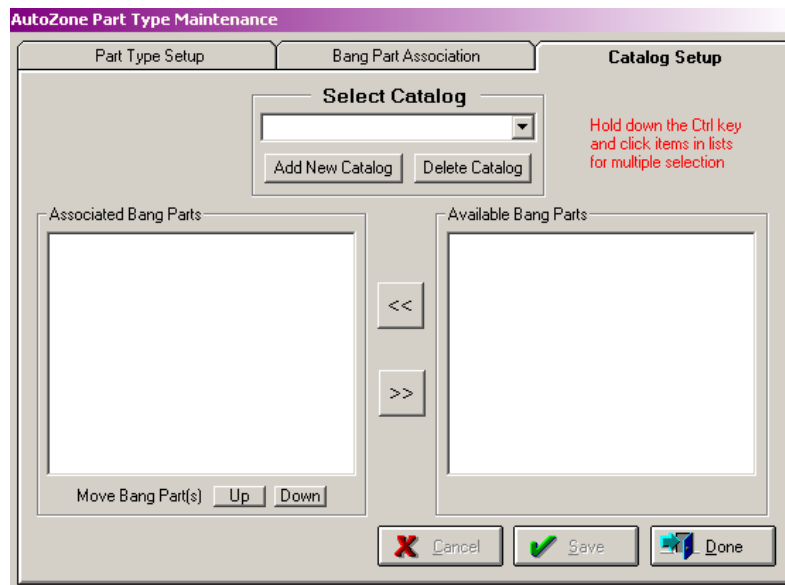
3. SETTING UP CUSTOM CATALOG VIEWS

The **CATALOG SETUP TAB** gives you the ability to **CREATE CUSTOM VIEWS (CATALOGS) OF THE AUTOZONE PARTS CATALOG** based on the associations of the **VAST !BANG PARTS** that were associated with the AutoZone part descriptions.

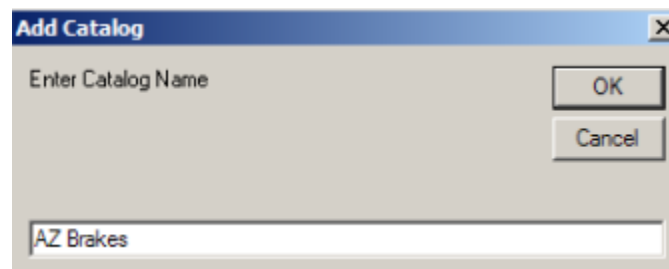
****NOTE:** If you need to **DELETE** or **MODIFY** an existing catalog, please **SKIP TO STEPS 8 & 9**. Note that your **CATALOG LISTING** in the **POINT OF SALE** will be **MODIFIED AUTOMATICALLY**.

ALSO, YOU CANNOT DELETE AN iSHOP CATALOG USING THE "CATALOGS" ICON IN MAINTENANCE. YOU MUST DELETE ITEMS FROM WITHIN THIS SCREEN!

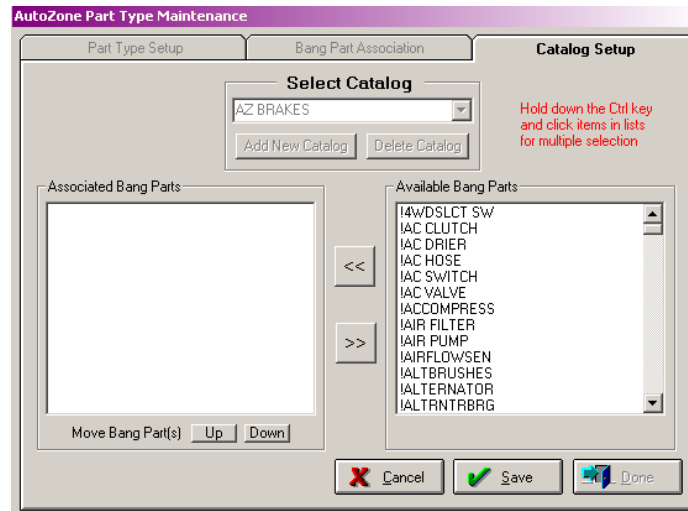
1. Open **VAST MAINTENANCE**.
2. Go to the **AUTOZONE PART TYPE MAINTENANCE** icon and click on the **CATALOG SETUP TAB**. You will see a screen similar to the one shown below.



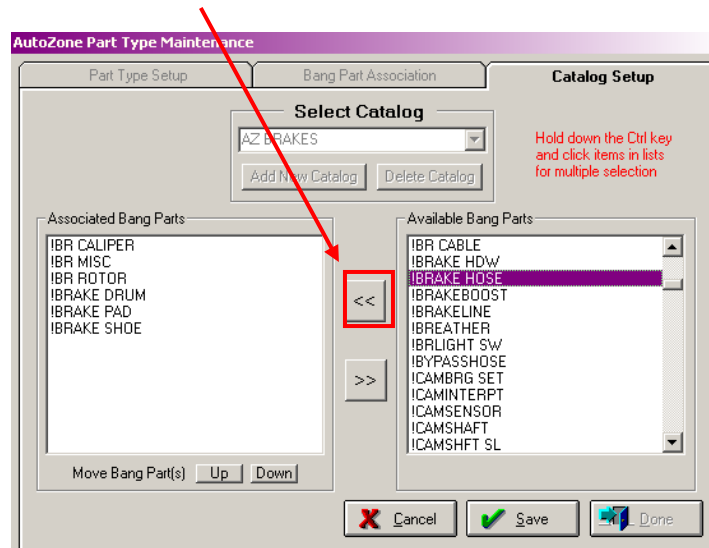
3. To add a new catalog: click the **ADD NEW CATALOG** button. In the window that appears, type a **NAME** that describes what type of parts will appear in the catalog, as in the example below. Then click **OK**.



- You will see all the bang parts appear in the **AVAILABLE BANG PARTS** column. Select the **TYPES** of **PARTS** you want to appear in the catalog by clicking on the bang part to highlight it. You can make **MULTIPLE SELECTIONS** by holding down the **CTRL** key on your keyboard while clicking on the bang parts you want to use.



- Then click on the **DOUBLE ARROW** button that points to the **LEFT** (found in the middle of the screen) to move the **HIGHLIGHTED** items over to the **ASSOCIATED BANG PARTS** column, as shown below.

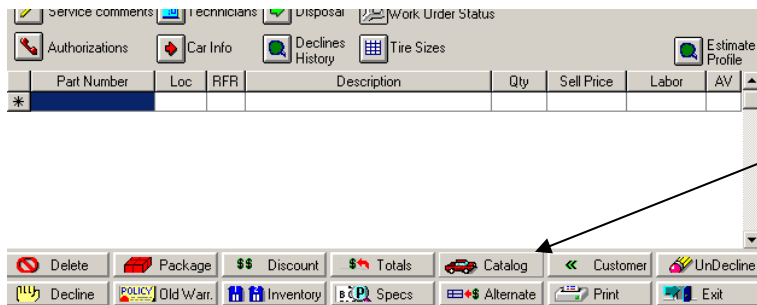


- When you are finished making your selections, click **SAVE** to save your changes.
- Repeat the **ABOVE STEPS 1-6**, to create any other **CATALOG VIEWS** you would like to have in VAST. When you are finished, click **DONE** to exit the screen.
- If you would like to **DELETE** any of the catalogs (including the ones that were pre-defined) you can select the catalog from the drop-down list at the top of the screen and click the **DELETE CATALOG** button.
- If you would like to **MODIFY** an existing catalog, select the catalog from the drop-down list at the top of the screen and then use the **DOUBLE ARROW** buttons to add or remove bang parts from the list of associated bang parts. When you are finished making changes, click **SAVE**.

USING YOUR AUTOZONE CATALOGS IN VAST

The use of the AutoZone iShop catalogs in the Vast Point Of Sale works the same as if using a Wrenchhead, Midas, or any of the other catalogs supported by Vast. The main difference will be in providing additional lookup requirements. Qualification data windows will be displayed when, and if, more information is required about the vehicle.

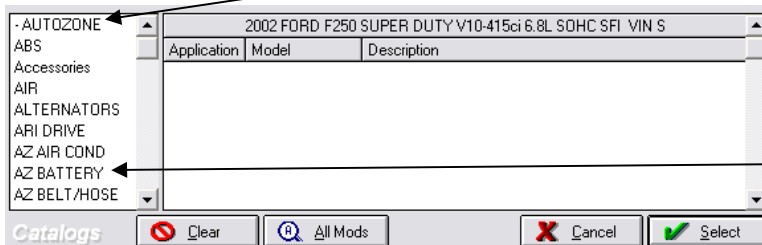
CHOOSING AN AUTOZONE CATALOG



There is no difference in using the Point of Sale functions in VAST.

Clicking on the **CATALOG** button will bring up the catalog selection screen.

The example shown to the left displays the catalog available list.



-AUTOZONE is the entry created for the entire AutoZone Catalog. Clicking this will display the base level of the catalog. You then have to make selections to get to the desired parts.

AZ BATTERY is an example of a **USER DEFINED CATALOG** that was created locally using the functions from the **AUTOZONE PART TYPE ASSOCIATIONS** menu in Vast Maintenance. Clicking here will display a catalog composed of parts from the associated part types. (Additional Qualification data windows may be displayed when and if more information is required about the vehicle).

1. EXAMPLE OF USING THE AUTOZONE CATALOG

1. From the part entry screen, click on the **CATALOG** button and select either one of the **CATALOG VIEWS** (such as “AZ BRAKE”) OR the **FULL AUTOZONE CATALOG** (“-AUTOZONE”) from the list.
2. **If you selected one of the catalog views** – please **SKIP** to **STEP 4**.

If you selected the full autozone catalog - You will see the following screen appear. This is the **BASE LEVEL** of the catalog.

2002 FORD F250 SUPER DUTY V10-415ci 6.8L SOHC SFI VIN S

- Anti-Theft
- Brakes & Traction Control
- Car Care & Chemicals
- Climate Control
- Collision, Body Parts & Hardware
- Cooling & Heating
- Drivetrain
- Electrical & Lighting
- Emission Control
- Engine Management
- Exhaust
- Exterior
- External Engine
- Flood Repair

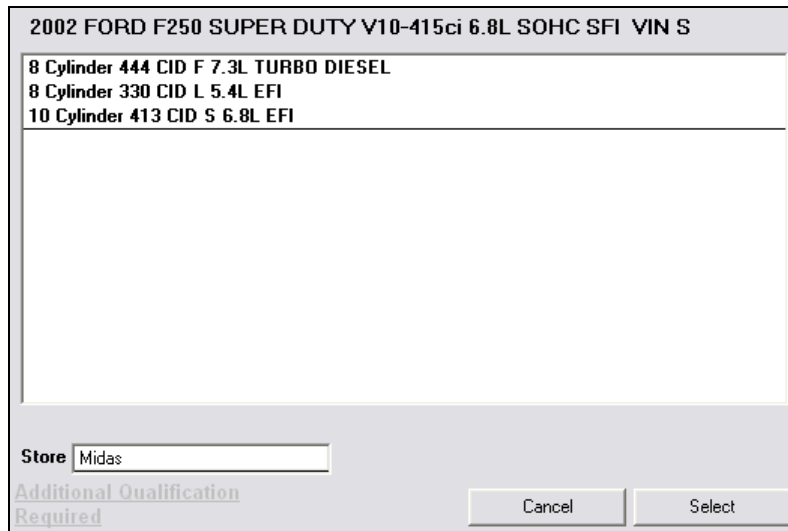
Store: Midas

Enter Part Type to Search

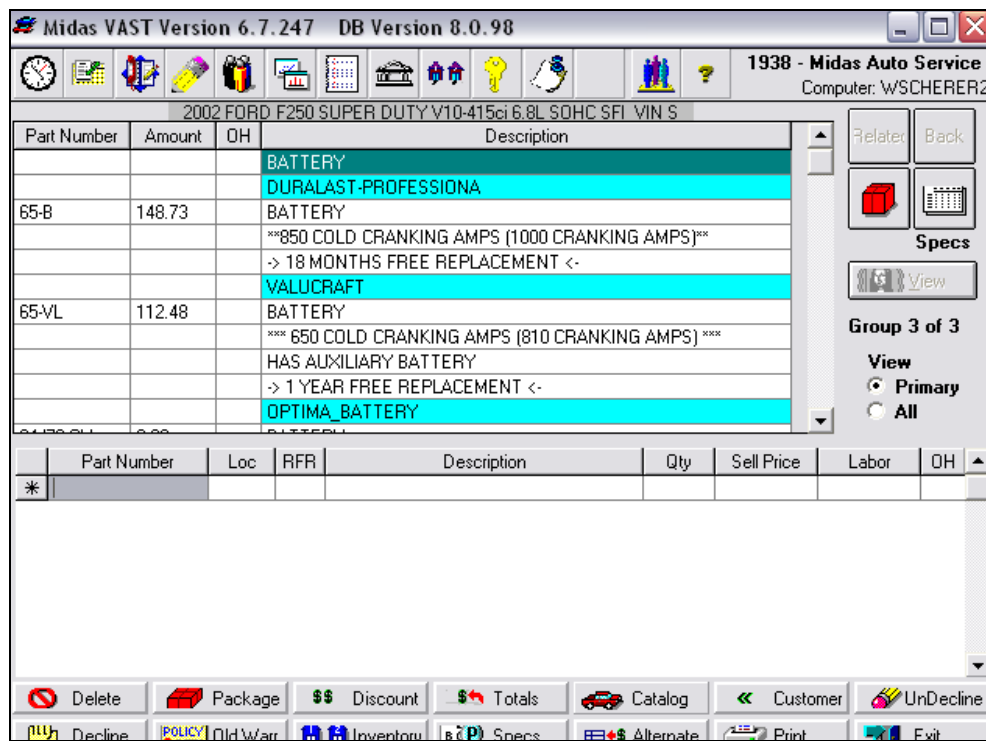
Additional Qualification Required

Back Cancel Select

3. You have several options on how to continue:
 - a. **If you know which catalog you want to view** – **CLICK** on the **CATALOG** to highlight it then click the **SELECT** button.
 - b. **If you are looking for a SPECIFIC PART TYPE** - **ENTER** a **WORD** or **WORDS** to **SEARCH FOR** into the “**ENTER PART TYPE TO SEARCH**” textbox and then click the **F1** button. All part types containing these words will appear. Make a selection by clicking on the part type to highlight it, and then click on the **SELECT** button to view the catalog.
 - c. **If you would like to CLOSE the CATALOG and return to the part entry screen** - click **CANCEL**.
4. After you have selected a catalog, you may see **ONE** or **MORE WINDOWS APPEAR**, asking for **ADDITIONAL VEHICLE DATA**, as shown below. **CLICK** on the **CORRECT ITEM** from the list and then click the **SELECT** button to continue with the catalog lookup.



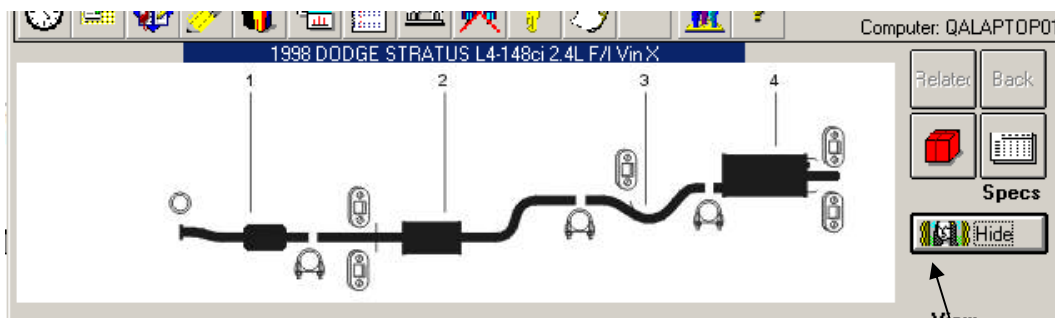
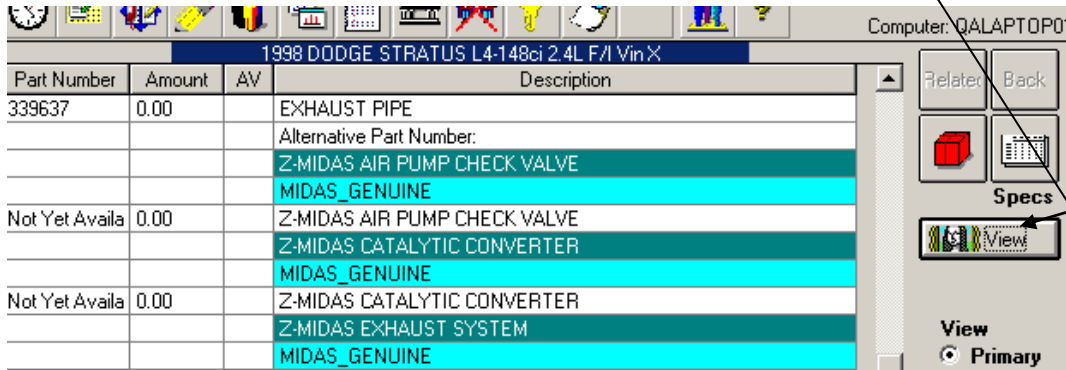
5. You will then see the **CONTENTS** of the **CATALOG** appear on the VAST screen, as shown below. This is the **SAME SCREEN** that you are familiar with from working with other Vast compatible catalogs.



6. **DOUBLE-CLICK** on the part you want to **ADD** to your **ESTIMATE**, and it will **APPEAR** on the Part Entry screen.

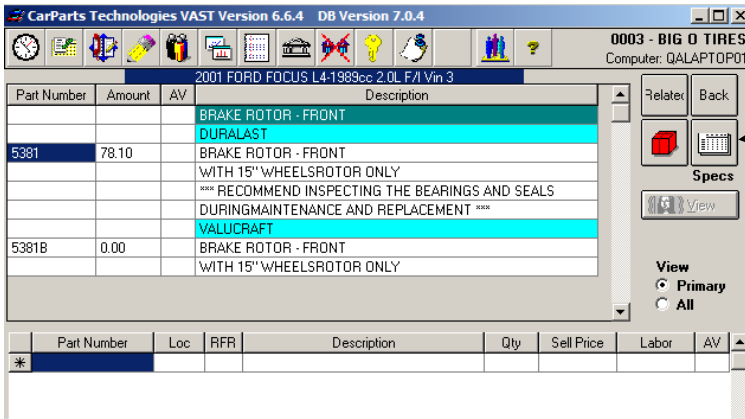
2. VIEWING THE EXHAUST IMAGES

The example below is showing a catalog generated by going through all the levels of the full catalog; same as all other text catalogs. If an image is provided, the **VIEW** button will be **ENABLED** and **CLICKING** this button will display the image.

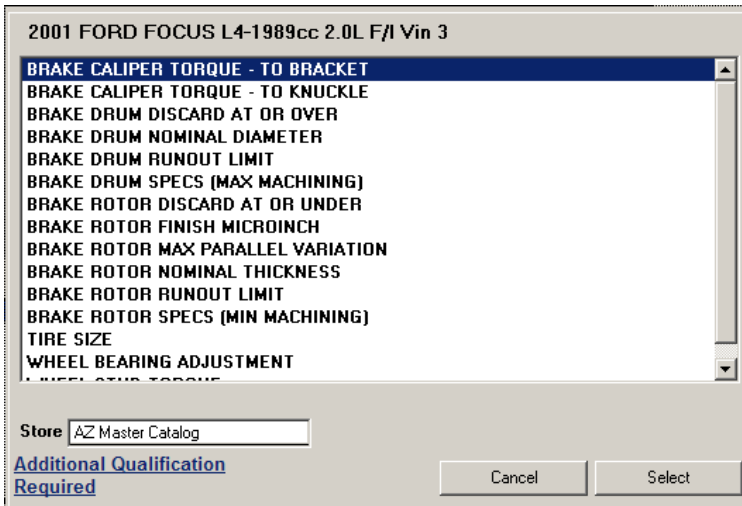


Clicking on the **HIDE** button will return to the catalog display screen.

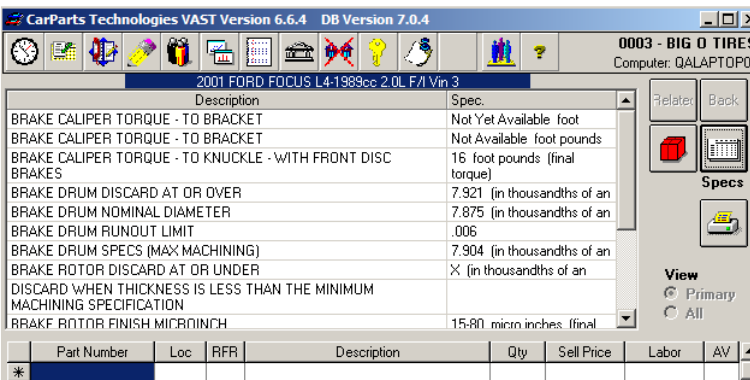
3. VIEWING SPECS



Clicking the **SPECS** button that is displayed on the catalog part lookup screen launches the search for vehicle specifications.



An Additional Qualification screen may appear asking for more information. **HIGHLIGHT** your choice, and click the **SELECT** button to continue the lookup.



A screen with the vehicles specifications is displayed.

Clicking on the **SPECS** button will return to the previous display.