



Activant Catalog Installation Guide

VAST POINT OF SALE

PREREQUISITES

- DVD-ROM drive (in at least one computer)
- All computers using Activant must be on the same workgroup or domain
- 2 GB of free disk space on the target drive of the server (C:\ or D:\) for the data
- Windows 2000 or Windows XP Professional

TABLE OF CONTENTS

INSTALLING THE ACTIVANT CATALOG..... 3

A. SHARING YOUR DVD-ROM DRIVE..... 3

B. RUNNING THE LASERCAT PREP - (SERVER ONLY) 5

C. INSTALLING THE LASERCAT SERVER..... 6

D. INSTALLING THE LASERCAT CLIENTS..... 12

E. RUNNING THE CATALOG ASSIGNMENT PROGRAM 16

**If you have any questions or problems with this installation, please contact:
Vast Support at 1-800-803-9762**

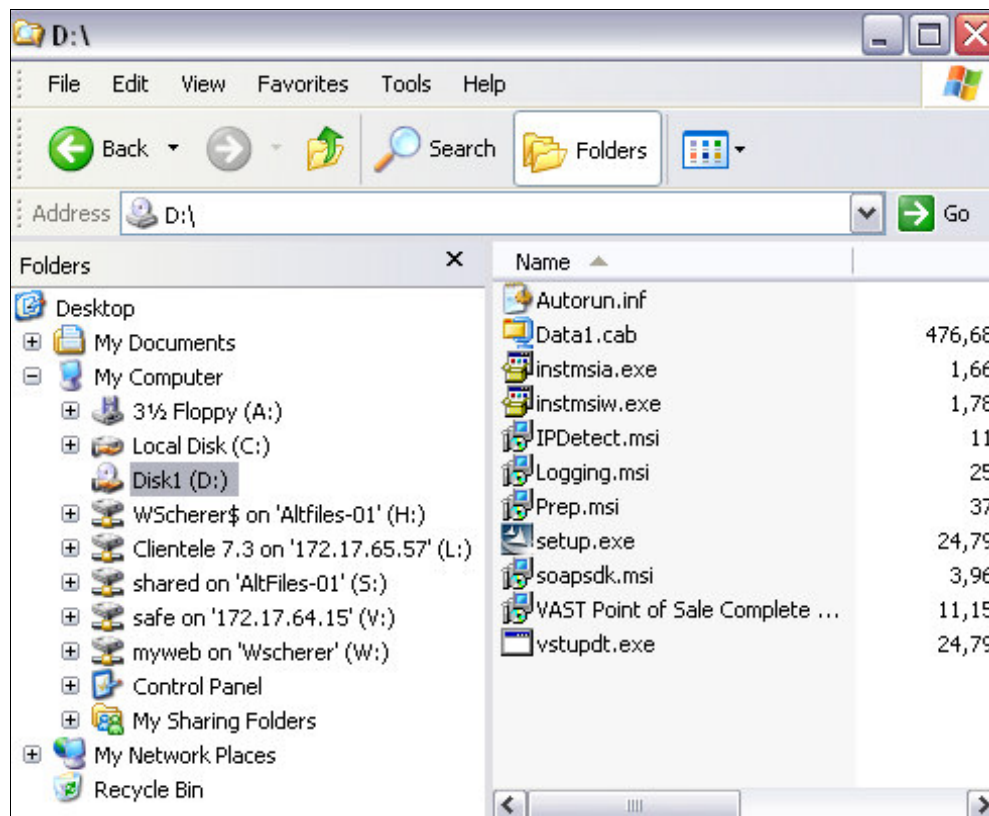
INSTALLING THE ACTIVANT CATALOG

This document will walk you through the **ACTIVANT** catalog installation. Please read through all of the instructions before beginning. These steps must be followed in the proper order to avoid installation problems.

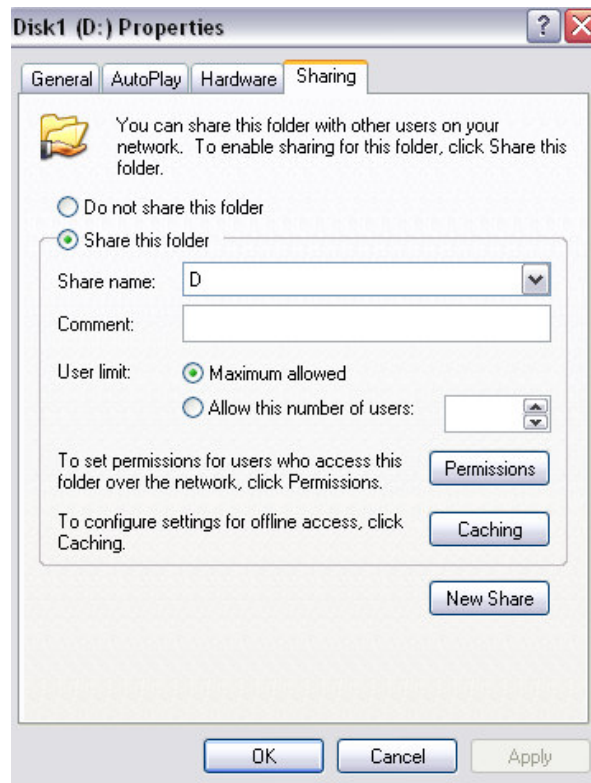
A. SHARING YOUR DVD-ROM DRIVE

Activant requires that the DVD-ROM drive is shared, even if the drive is on the local machine. Please follow these steps on the computer where the DVD-ROM drive is located in order to share your DVD-ROM drive before beginning the installation.

1. Right-click on the **MY COMPUTER** icon on your desktop and click **EXPLORE**. You will see a list of drives and folders appear, as shown below.



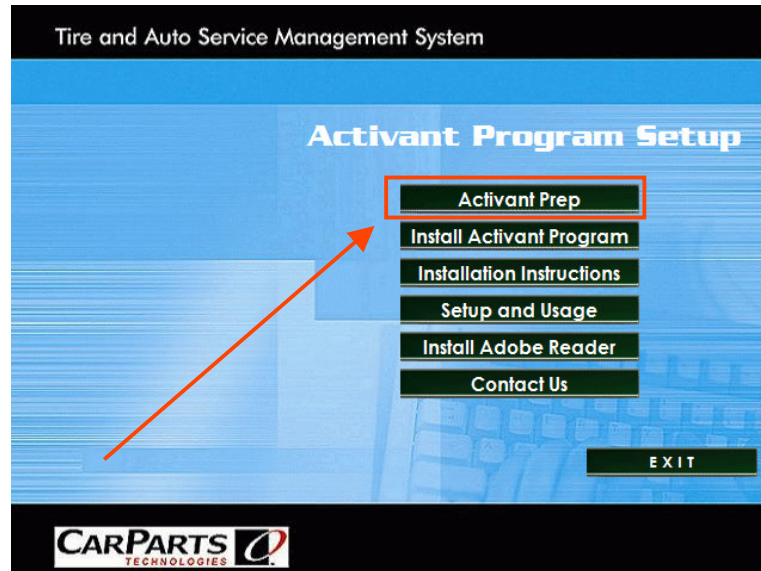
2. Right-click on your **DVD-ROM** drive (usually D:\ or E:\) and select **SHARING AND SECURITY** from this list. (**Windows 2000 users* – select **SHARING...**). You will see a screen similar to the one shown below.



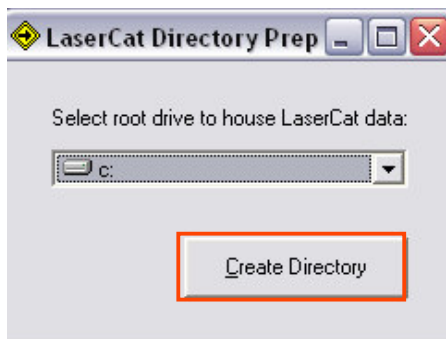
3. Select the **SHARE THIS FOLDER** radio button. The default share name will be the drive letter of your **DVD-ROM** drive. You may change this name if you'd like.
4. You may also need to set the permissions accordingly, to make sure that all users are able to access this drive.
5. When you are finished, click **APPLY**, and then click **OK** to exit the screen.

B. RUNNING THE LASERCAT PREP - (SERVER ONLY)

1. Insert your **ACTIVANT LASERCAT CD** into your server's **CD-ROM** drive. You should see the installation menu screen appear automatically, as shown below. If it does not, please click on your **START BUTTON** and select **RUN**. Type in: "**D:\SETUP.EXE**" (If your **CD-ROM** drive is a different drive letter, please change it accordingly) and click **OK**.



2. Click on the **ACTIVANT PREP** button. You will see the following screen appear. This will create a shared directory named "**LaserCat**" which will contain your catalog data. Click on the drop down menu and select the drive where you would like to install Activant. Then click **CREATE DIRECTORY**. The folder will be created and shared for you automatically.

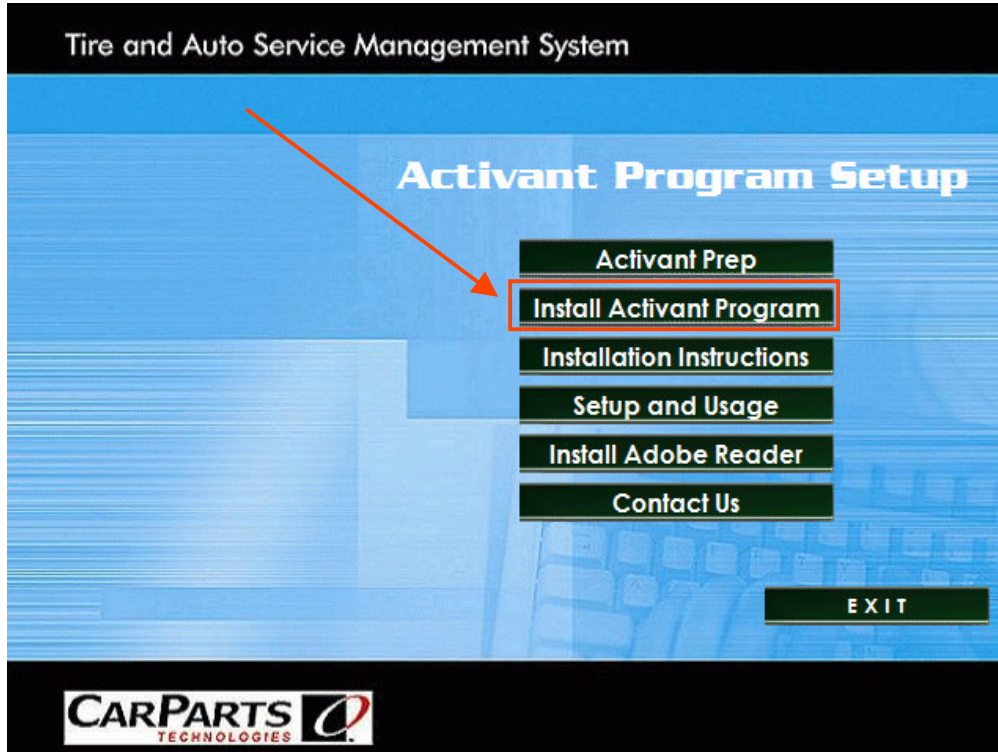


3. When the process is complete, the "**Create Directory**" button will change to a "**Done**" button. Click **DONE** and you will be returned to the main installation screen.

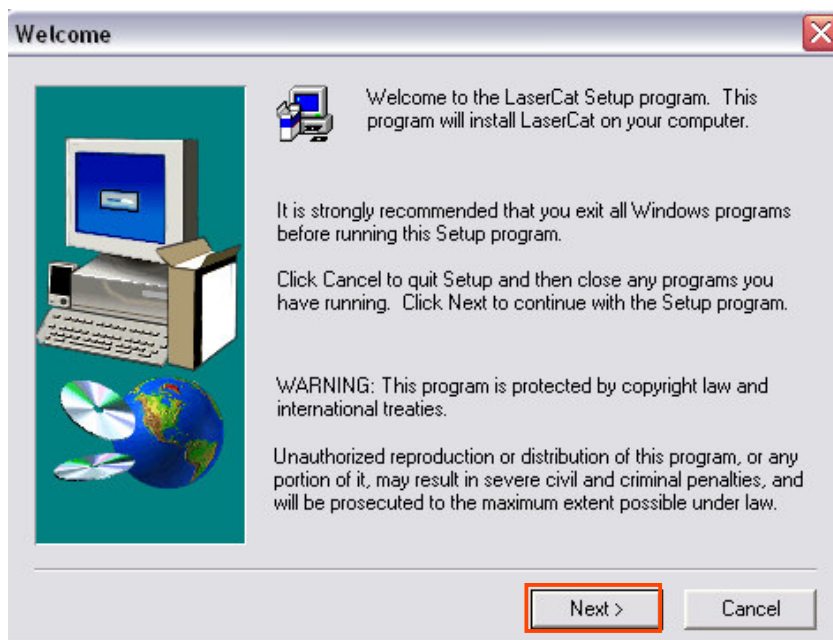
****NOTE:** Before continuing, please **VERIFY** that the **LASERCAT FOLDER** is **SHARED WITH FULL PERMISSIONS FOR ALL USERS**.

C. INSTALLING THE LASERCAT SERVER

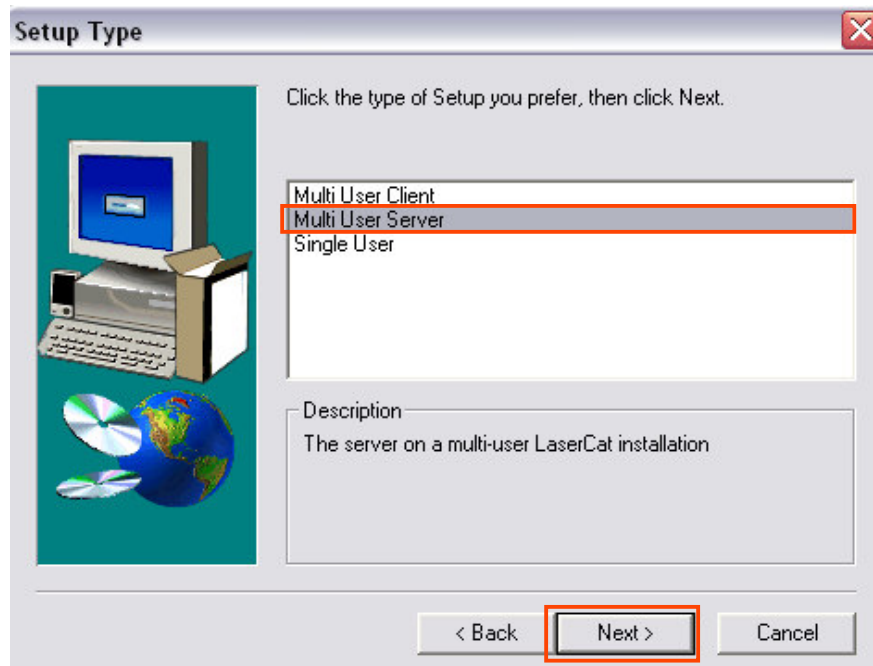
1. From the installation menu, click the **INSTALL ACTIVANT** button, as shown below.



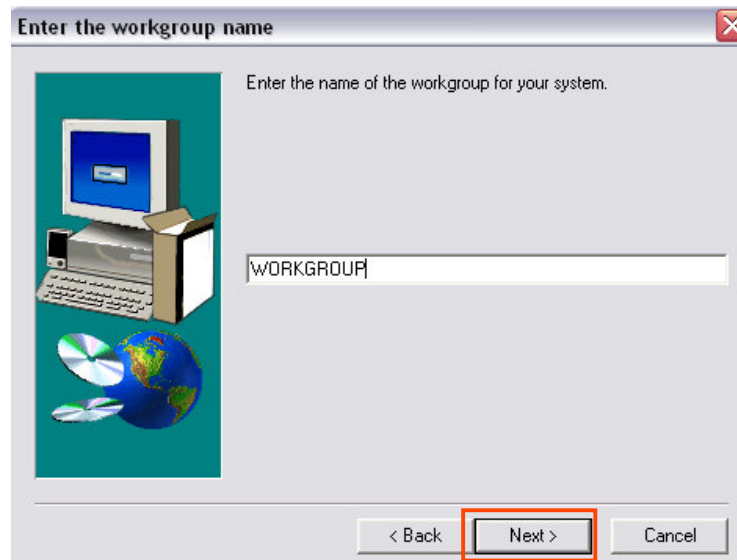
2. You should then see the **WELCOME SCREEN** appear, as shown below. Click **NEXT**.



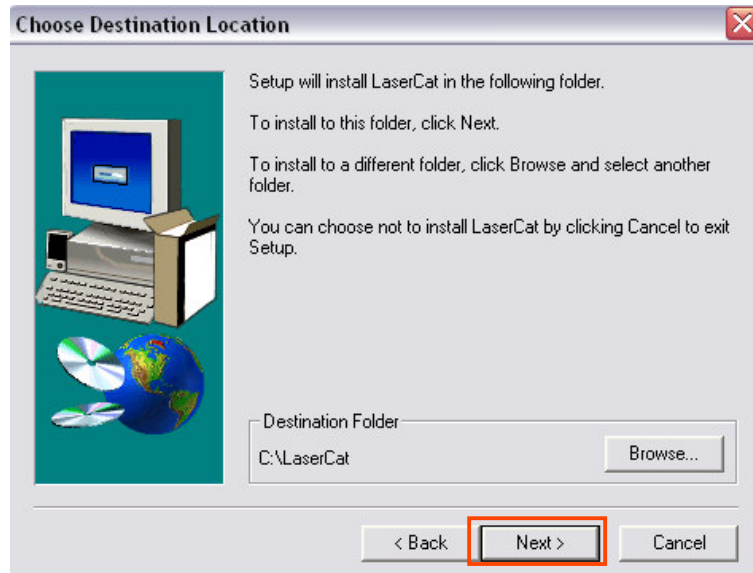
3. You will then see the following screen, which allows you to select the type of installation. Select **“MULTI USER SERVER”** and then click **NEXT**.



4. You will then need to enter the name of the workgroup on your network. Some examples of default workgroups are **“WORKGROUP”** or **“MSHOME”**. When you have entered the correct workgroup name, click **NEXT**.

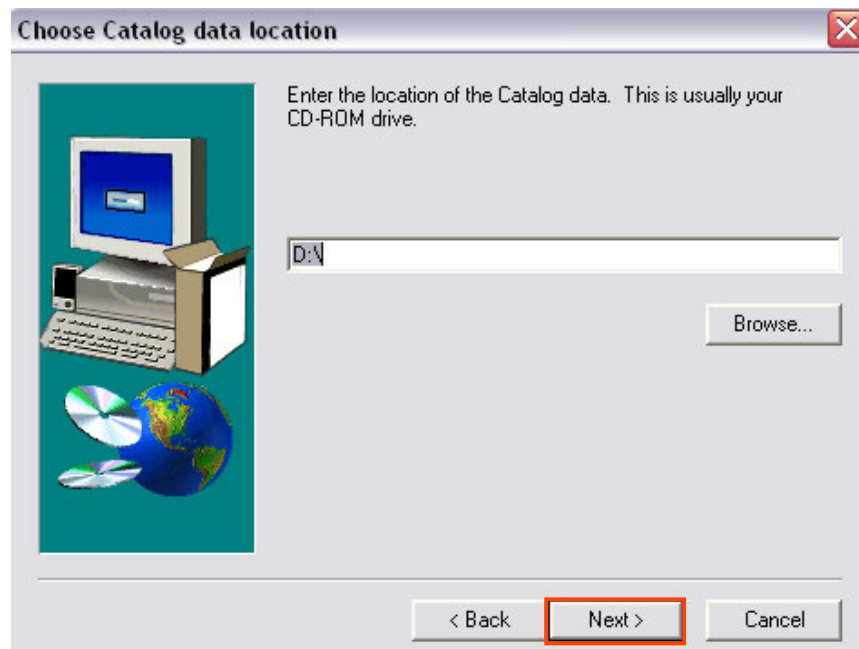


5. You will then see the **DESTINATION LOCATION** window appear, as shown below. Click **NEXT**.

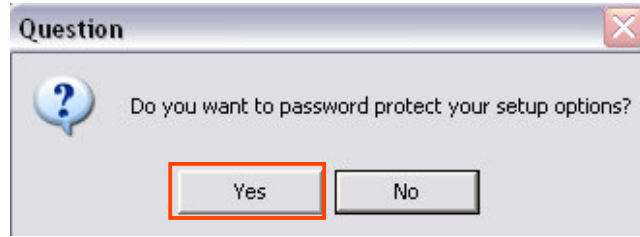


6. The next screen that appears is the **CATALOG DATA LOCATION** screen. If your **DVD-ROM** drive is a different drive letter than **D:**, you will need to change the drive letter here. Otherwise, leave it as the default. Then click **NEXT**.

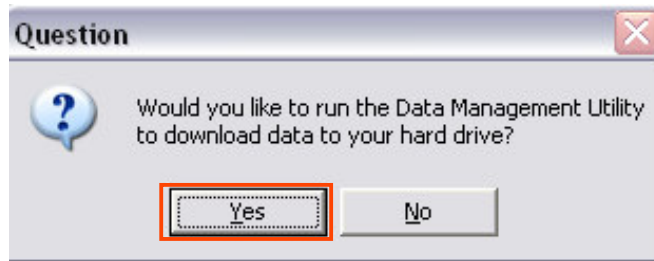
****NOTE:** If your **DVD-ROM** drive is located on **ANOTHER COMPUTER** on your network, you will need to make sure that you have **PERMISSIONS** to **ACCESS IT** through the **NETWORK**. Then, click **BROWSE** and click **NETWORK** to **MAP A NETWORK DRIVE** to the shared DVD-ROM drive.



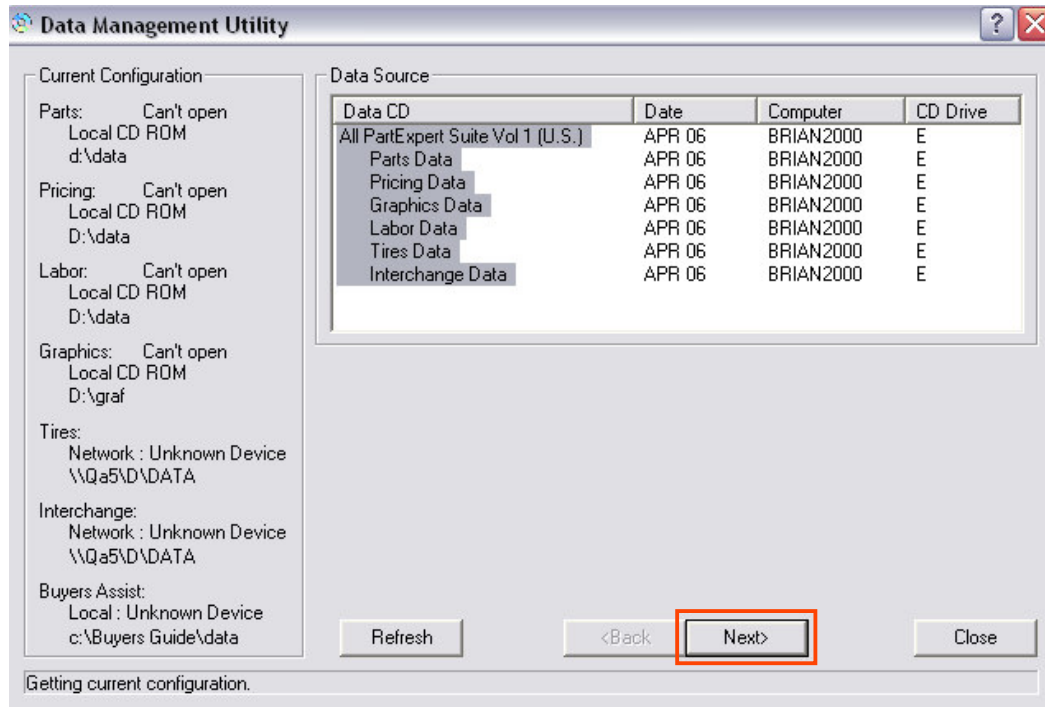
- You will then see the following messagebox, asking whether or not you want to password protect your setup options. Click **YES** to set a password, otherwise click **NO**.



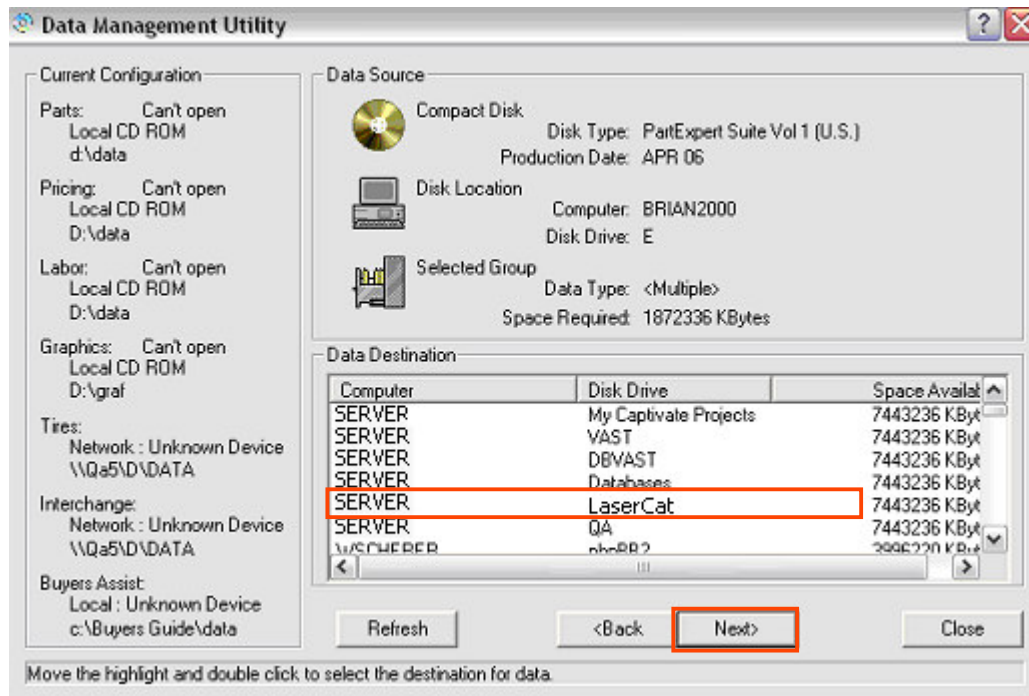
- You will see a screen showing you the progress of the install. When the installation is complete, you will see the screen shown below, asking if you would like to download the data to your hard drive. Remove the **VAST ACTIVANT INSTALL CD** from your DVD-ROM drive and insert the **ACTIVANT PART SUITE DVD**. Then click **YES**.



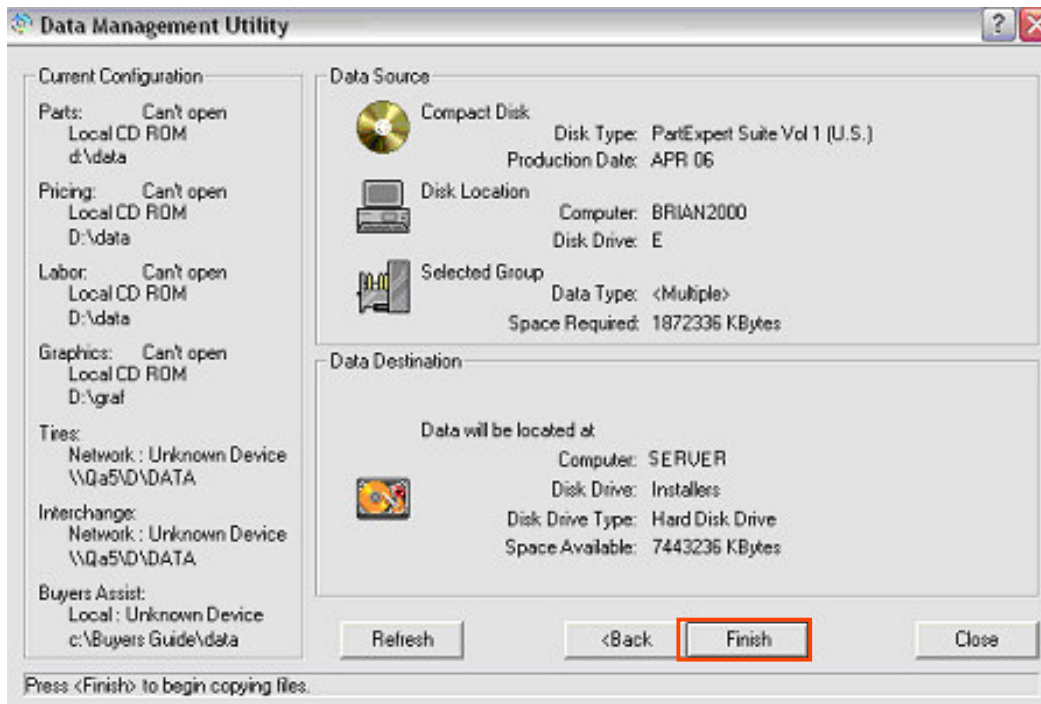
- You will then see the **DATA MANAGEMENT UTILITY** program, which will automatically search for the **DVD-ROM** drive that contains the **MONTHLY DATA** and bring up a screen similar to the one shown below. Click **NEXT**.



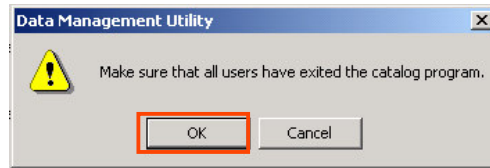
- You will then see the following screen, which gives you an overview of the data locations and shared folders on your network. Select the “**LaserCat**” folder on the server computer, then click **NEXT**.



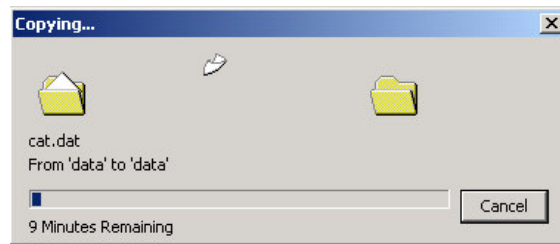
- On the next screen, click **FINISH** to begin the download process, as shown below.



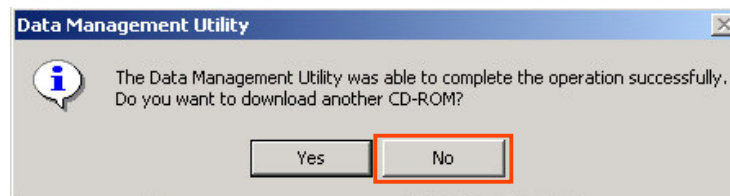
12. You may see the following message box appear, asking you to make sure that all users have exited the catalog. Click **OK**.



13. You will then see a new window appear which will show you the progress of the installation, similar to the one shown below. The installation may take **UP TO 15 MINUTES OR MORE** to complete.



14. When the files have **FINISHED COPYING**, you will see the **MESSAGE BOX** shown below. Click **NO** and you will be **RETURNED TO THE INSTALLATION MENU**. The installation of the server is complete.

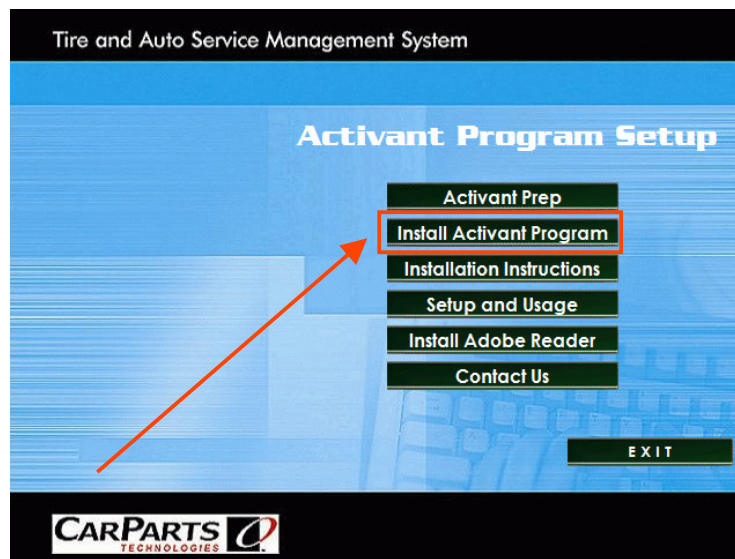


15. Click **EXIT** on the installation menu, and then click **EXIT AGAIN** to be returned to your desktop.

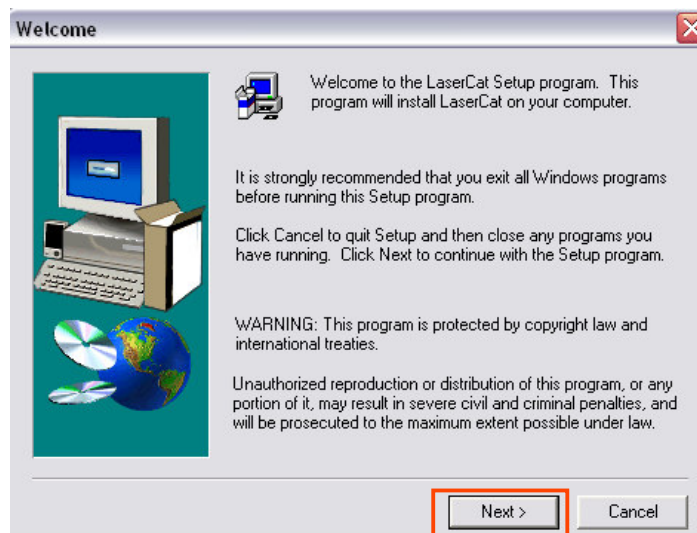
D. INSTALLING THE LASERCAT CLIENTS

****NOTE:** You will need to complete the following steps on **EACH ONE OF YOUR WORKSTATIONS** that will be using Activant **BEFORE** moving onto the next section.

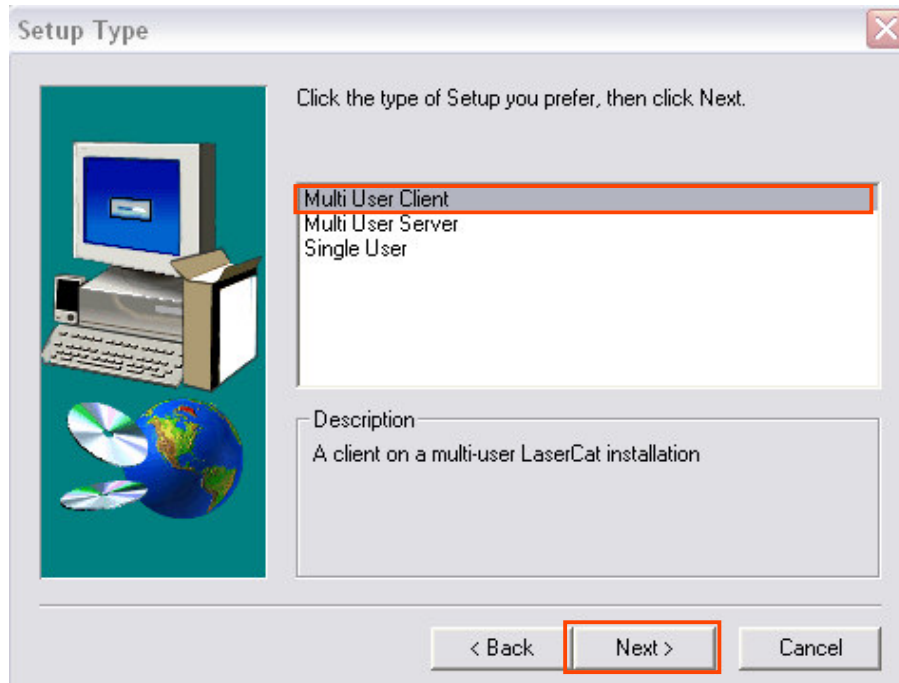
1. Insert your **ACTIVANT LASERCAT CD** into your workstation's **CD-ROM** drive. You should see the installation menu screen appear automatically, as shown below. If it does not, please click on your **START BUTTON** and select **RUN**. Type in: "**D:\SETUP.EXE**" (If your **CD-ROM** drive is a different drive letter, please change it accordingly) and click **OK**.



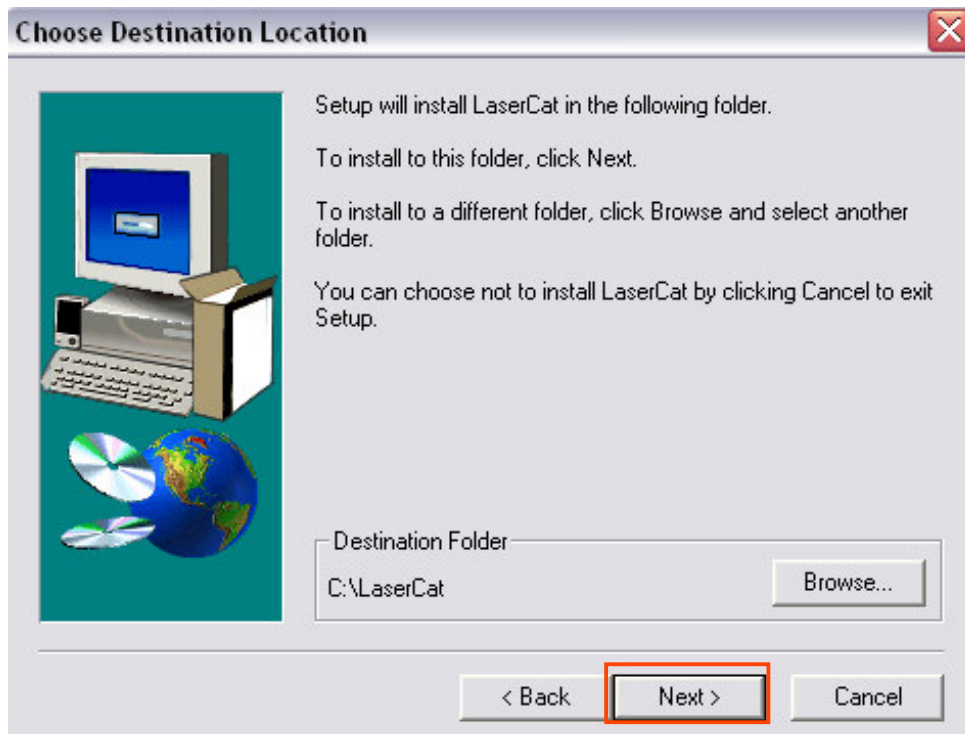
2. Then click on the **INSTALL ACTIVANT PROGRAM** button, you will see the **WELCOME SCREEN APPEAR**, as shown below. Click **NEXT**.



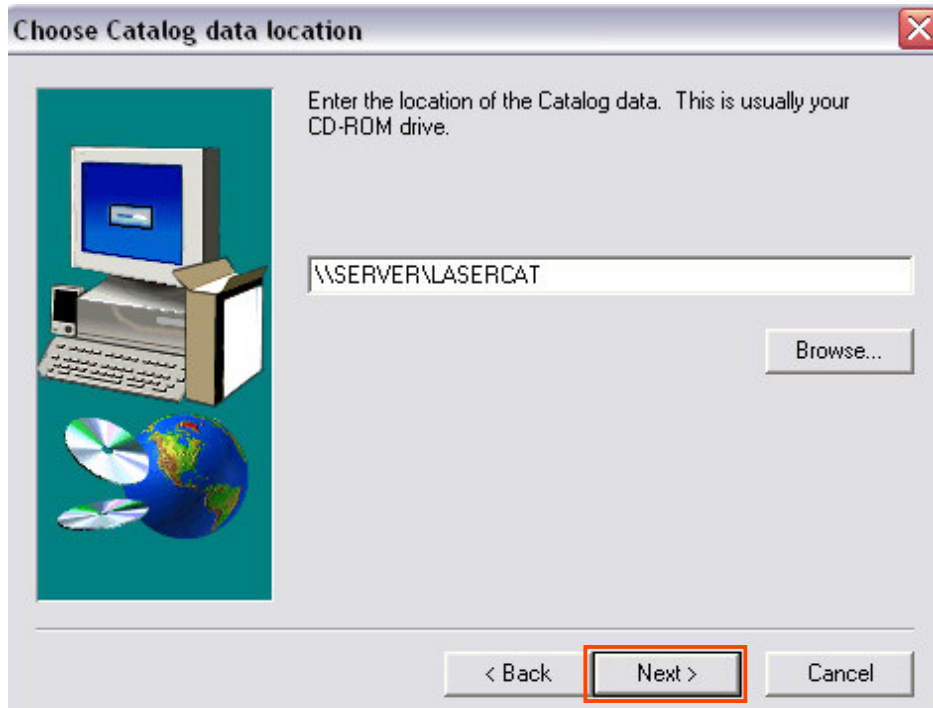
3. You will then see the following screen, which allows you to select the type of installation. Select **“MULTI USER CLIENT”** and then click **NEXT**.



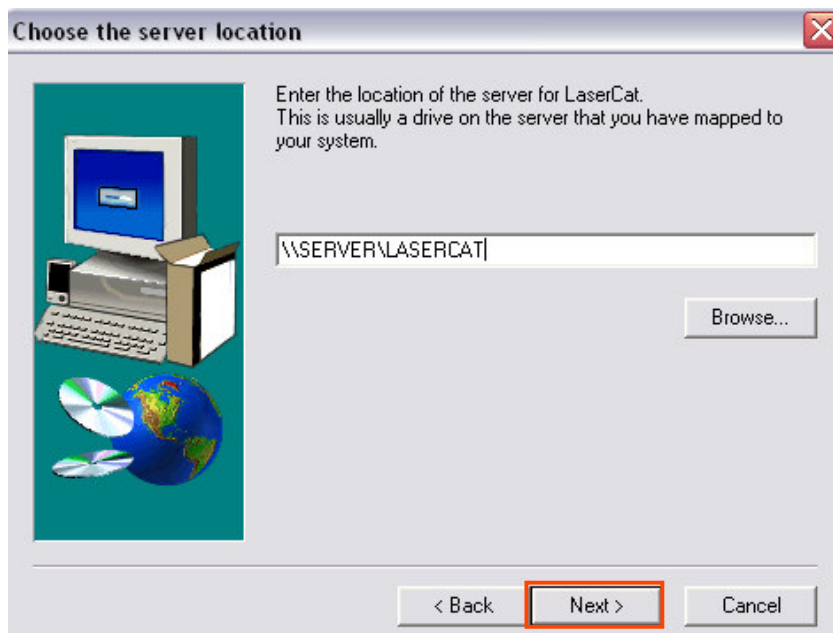
4. You will then see the **DESTINATION LOCATION** window appear, as shown below. Click **NEXT**.



- The next screen that appears is the **CATALOG DATA LOCATION** screen. You will need to either **ENTER** or **BROWSE** to the **LASERCAT FOLDER** on your **SERVER**. Then click **NEXT**, as shown below.



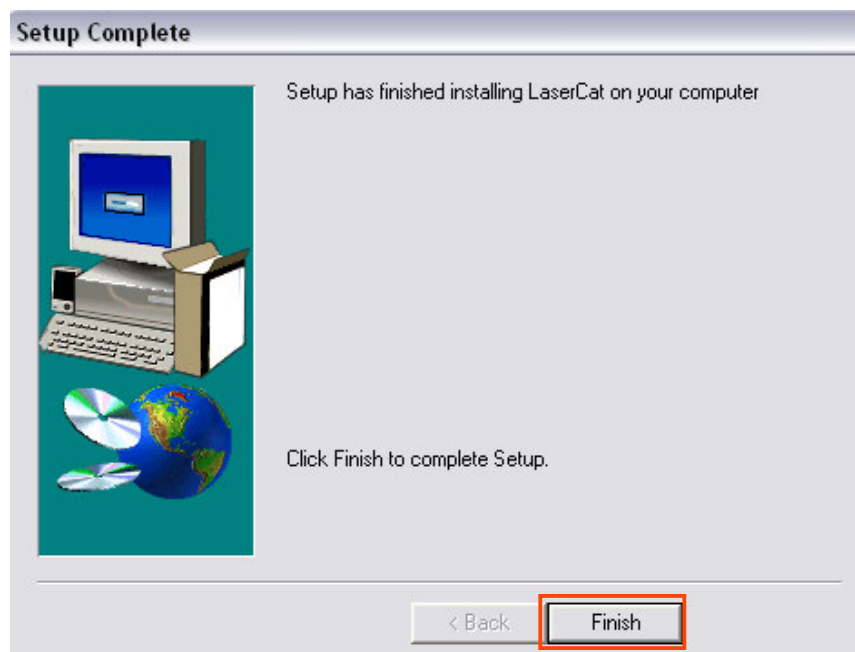
- You will then see the **SERVER LOCATION** screen. You will need to enter the **PATH** to the **LASERCAT FOLDER** on your **SERVER**. This is the same network path that you entered on the last screen. Then click **NEXT**.



7. You will then see the following message box, asking whether or not you want to password protect your setup options. Click **YES** to set a password, otherwise click **NO**.



8. You will see a screen showing you the progress of the install. When the files have been copied, you will see the screen shown below, letting you know that the **INSTALLATION** is **COMPLETE**. Click **FINISH** and you will be returned to the installation window.

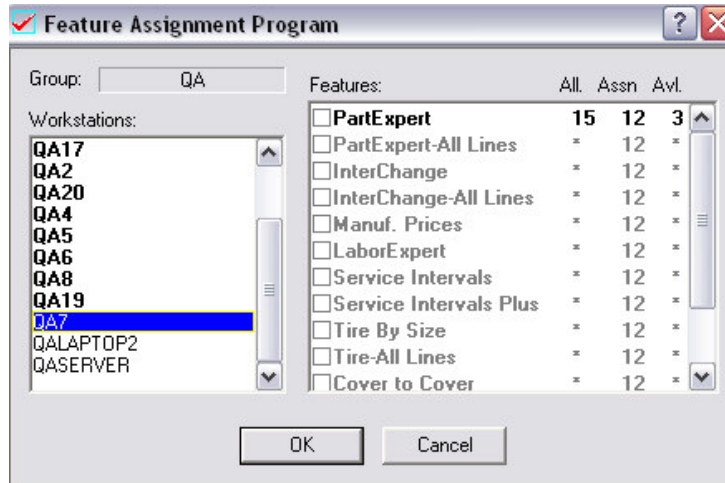


9. From the installation window, click **EXIT** and then click **EXIT** again. You will be returned to your desktop.

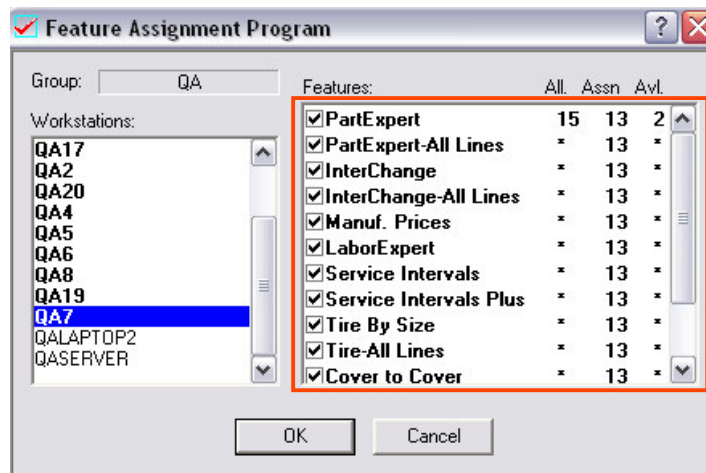
E. RUNNING THE CATALOG ASSIGNMENT PROGRAM

****NOTE:** This step **MUST** be completed on your **SERVER** computer.

1. On your server, click on the **START BUTTON** and select **RUN**. Type in: **“C:\LASERCAT\PROGRAM\CATALOGASSIGN.EXE”** (If you installed Activant on a different drive letter, please change it accordingly) and click **OK**. You should then see the **FEATURE ASSIGNMENT** screen appear, as shown below.



2. You will see the name of all of the computers on your network appear under **“WORKSTATIONS”**. **SELECT ONE** of your **WORKSTATIONS** and then **PUT a CHECKMARK** in **ALL** of the **CHECKBOXES** in the **“FEATURES”** column, as shown below.



3. **COMPLETE STEP 2** for **EACH ONE** of your **WORKSTATIONS**. When you are finished, all of your workstations should be listed in bold. Then click **OK**.