



Activant Manufacturer Mapping Guide

VAST POINT OF SALE

INTRODUCTION

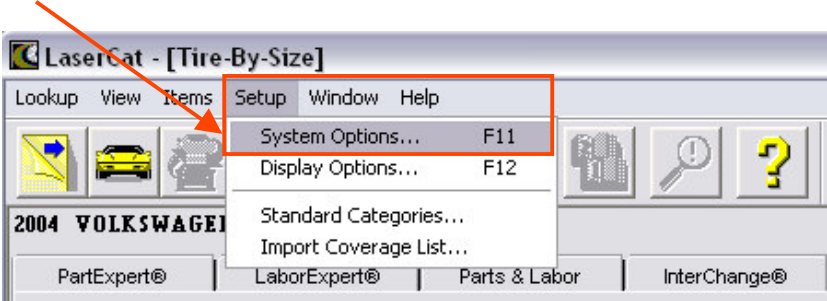
This document will walk you through the steps necessary to map your current **VAST** manufacturer code to the manufacturer codes in the **ACTIVANT** catalog. This will allow you to view your stock availability (quantity on hand) from within the Activant catalog screen and will provide pricing on items that are built on your master table.

A. MAPPING THE MANUFACTURERS IN ACTIVANT

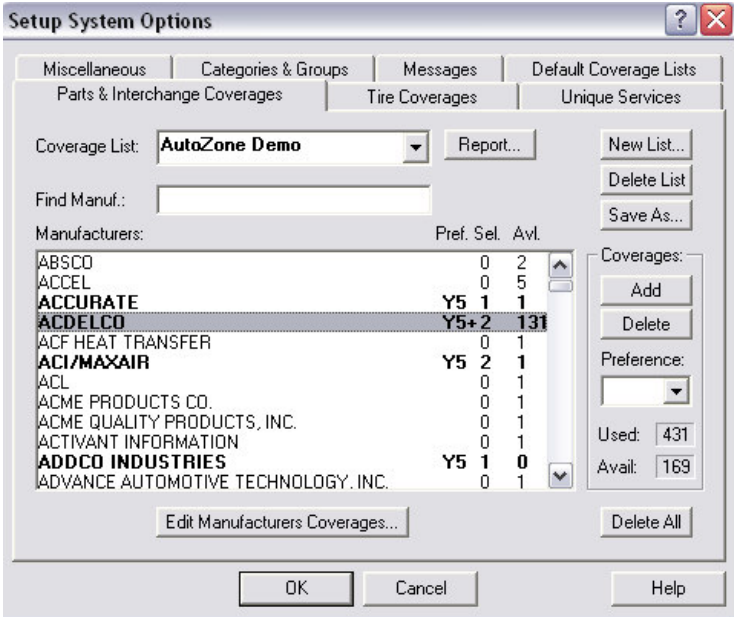
- 1. Double-click on the **LASERCAT** icon on your desktop, shown below. The catalog screen will open.



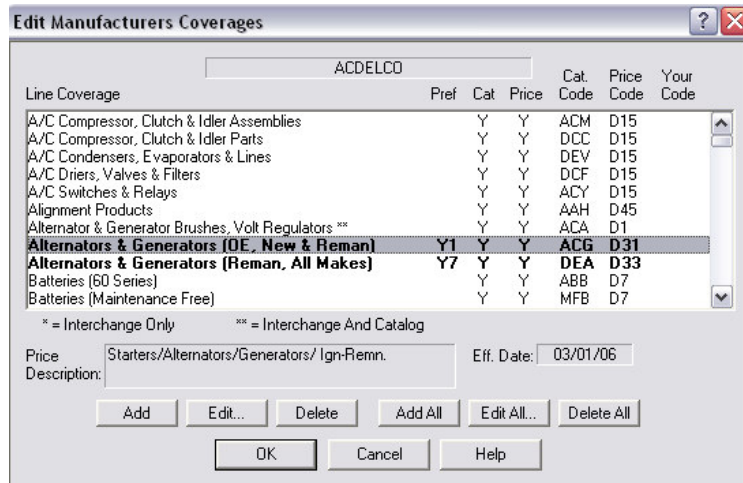
- 2. Click on **“Setup”** from the menu bar and then click **“System Options”**, as shown below.



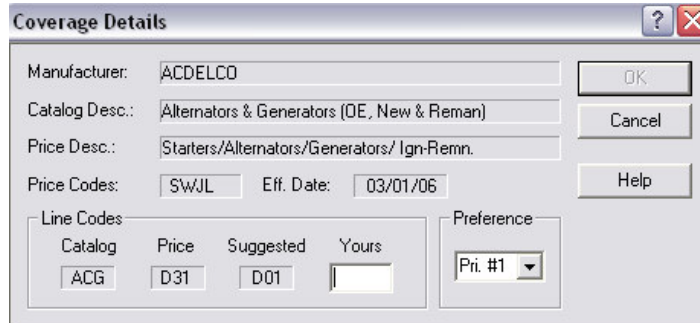
- 3. If you are mapping regular parts, click on the **“Parts & Interchanges”** tab. You will see a screen similar to the one shown below. If you are mapping tires, click on the **“Tire Coverages”** tab and you will see a comparable screen appear. These screens will list all of the available manufacturers. The manufacturers that you have selected are displayed in bold.



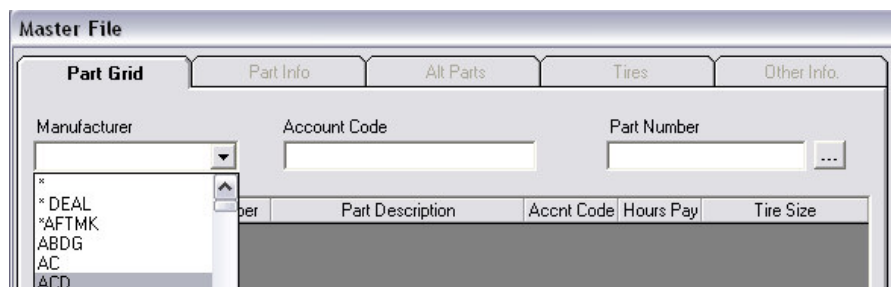
- To assign the manufacturer code, select one of the manufacturers listed in bold and click the **“Edit Manufacturers Coverages...”** button. You will be taken to the following screen, which lists all coverage lines for the manufacturer. The lines you selected will be listed in bold. You will see that there are two columns, a **“Cat Code”** column, which is the manufacturer code in Activant, and the **“Your Code”** column, which is the manufacturer code you will assign from Vast.



- To assign the manufacturer code from Vast, select one of the lines listed in bold and click the **“Edit”** button. You will see a screen similar to the one shown below.



- You will need to enter the manufacturer code from Vast into the **“Yours”** column. To find out what the manufacturer code is in Vast, open Vast Maintenance and go to the **MASTER FILE** icon. You can either click on the **“Manufacturer”** drop-down menu to view a list of all manufacturers, as shown below, or you can look up a specific part number to find the manufacturer code.



7. Once you know the Vast manufacturer code, you can assign it in Activant.

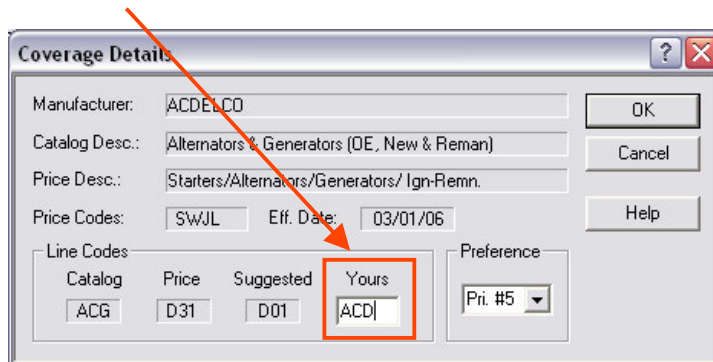
****NOTE:** The **ACTIVANT** catalogs will **ONLY ALLOW** a code of **3 CHARACTERS OR LESS** to be assigned. Because of this, if your Vast manufacturer code is **MORE THAN 3 CHARACTERS**, there are some **ADDITIONAL STEPS** you will need to follow. **PLEASE READ THE FOLLOWING INSTRUCTIONS CAREFULLY BEFORE BEGINNING.** You will need to assign a code for **EACH LINE** within each manufacturer.

IF THE VAST MANUFACTURER CODE IS 3 CHARACTERS OR LESS:

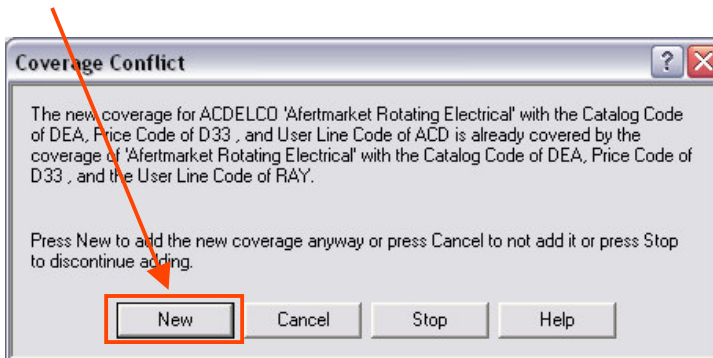
8. You can assign the code by typing it into the “Yours” column on the **COVERAGE DETAILS** screen in Activant, as shown below. Then click **OK**.

****NOTE:** You may see that there is already a code entered in the “Yours” column. If this is the case, simply delete the current entry and type in your manufacturer code instead.

Example: If the manufacturer code for ACDelco in Vast is “ACD” you would enter it into the “Yours” textbox, as shown below.

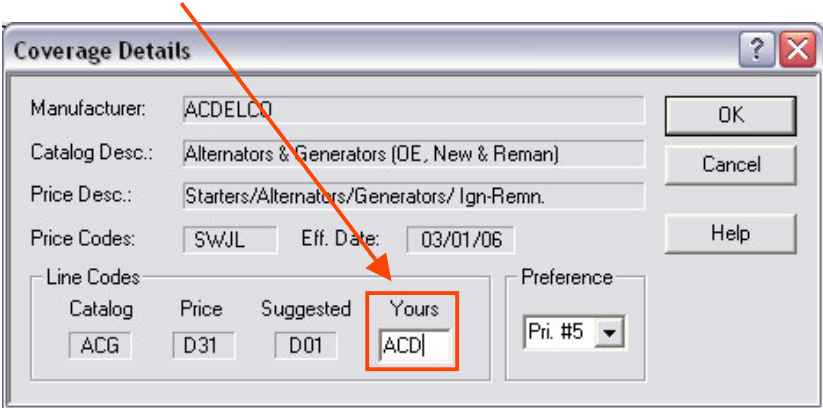


9. You may see a screen similar to the one shown below appear. If you see this screen, click **NEW** to assign the new manufacturer code. You will then be returned to the Edit Manufacturer’s Coverages screen, where you will need to continue assigning the manufacturer codes for each of the lines selected for this manufacturer.

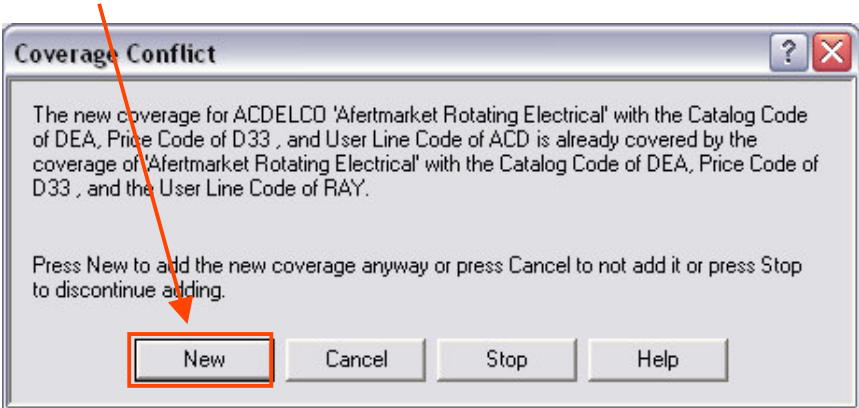


IF THE MANUFACTURER CODE IN VAST IS MORE THAN 3 CHARACTERS:

10. You will need to assign a 3 character code within Activant first. You can either select your own, or use the code listed in the “**Suggested**” box in Activant, as shown below. Enter the 3 character code into the “**Yours**” column and then click **OK**.



11. You may see a screen similar to the one shown below appear. If you see this screen, click **NEW** to assign the new manufacturer code. You will then be returned to the Edit Manufacturer’s Coverages screen, where you will need to continue assigning the manufacturer codes for each of the lines selected for this manufacturer.

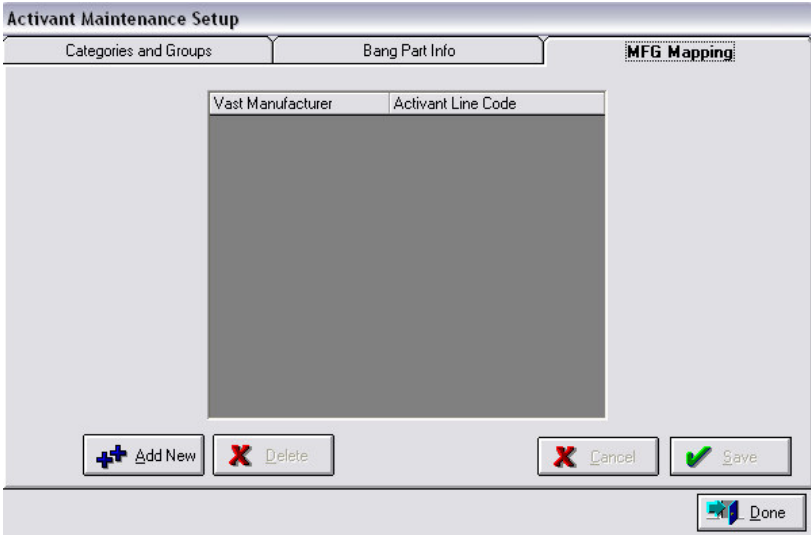


****NOTE:** You **MUST** use the same 3 character code for each category line within each manufacturer.

12. After you have assigned the 3 character code for **every** category line within Activant, you will need to open Vast Maintenance and go to the **ACTIVANT CATEGORY GROUPS** icon.

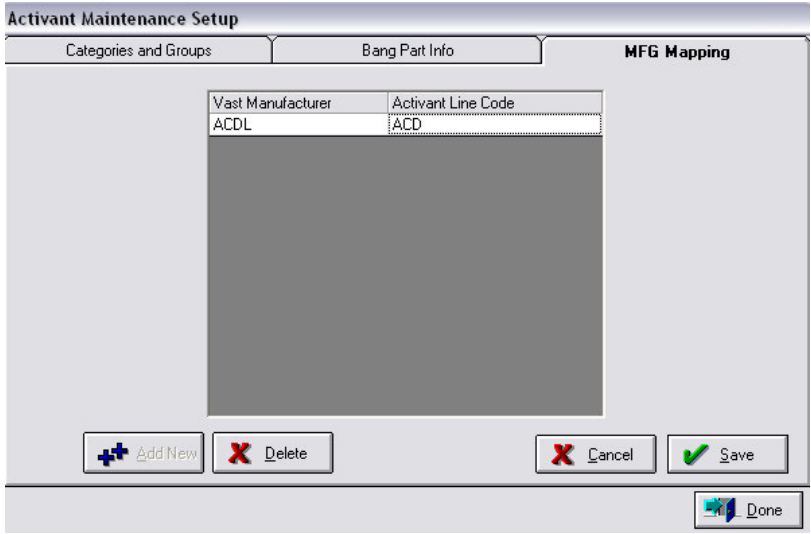


13. When the screen opens, click on the **MFG MAPPING** tab. You will see a screen similar to the one shown below. Click the **ADD NEW** button. A new line will appear.



14. Enter the **VAST MANUFACTURER CODE** and then hit the **TAB** key and enter the **3 CHARACTER MANUFACTURER CODE YOU ENTERED IN ACTIVANT**, as shown below.

Example: We assigned a 3 character code of “ACD” to all of our ACDelco lines in Activant, but our Vast manufacturer code is “ACDL”. Therefore, on this screen, we assigned the Vast code of “ACDL” to the Activant code of “ACD”.



15. Then click **SAVE** and **DONE** to exit the screen and return to the Vast Maintenance main menu. You have now properly assigned this manufacturer for use with Activant.

****NOTE:** You will need to repeat these steps for **every manufacturer** selected in Activant.